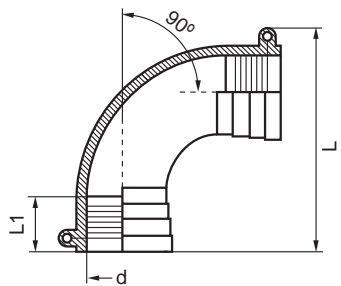
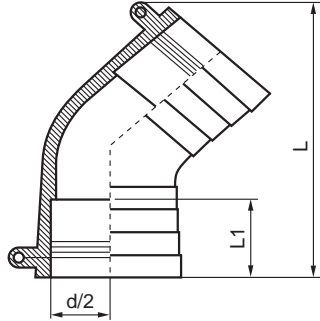


Electrofusion Specialty Fittings Electrofusion 90 Degree Elbows



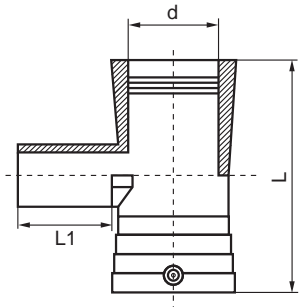
Nominal Pipe Size d		L	L1	Unit Weight in lbs.	PSI	Item Code
3/4"	IPS	3.86	1.50	0.15	240	90EF-1-075-IPS
1"	CTS	4.29	1.61	0.31	240	90EF-1-CTS
1"	IPS	4.29	1.61	0.22	240	90EF-1-IPS
1 1/4"	IPS	5.16	1.85	0.37	240	90EF-125-IPS
1 1/2"	IPS	6.10	2.01	0.62	240	90EF-150-IPS
2"	IPS	7.44	1.89	1.15	240	90EF-2-IPS
3"	IPS	9.53	2.76	2.45	240	90EF-3-IPS
4"	IPS	11.69	3.23	6.61	240	90EF-4-IPS
6"	IPS	13.19	3.94	9.19	220	90EF-6-IPS
8"	IPS	19.69	4.13	33.80	220	90EF-8-IPS

Electrofusion Specialty Fittings Electrofusion 45 Degree Elbows



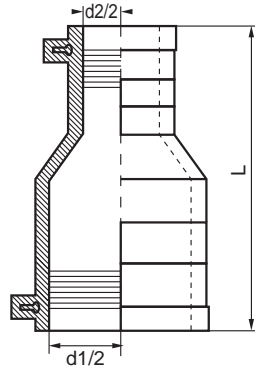
Nominal Pipe Size d		L	L1	Unit Weight in lbs.	PSI	Item Code
1"	CTS	4.57	1.61	0.51	240	45EF-1-CTS
1"	IPS	4.57	1.61	0.18	240	45EF-1-IPS
1 1/4"	IPS	5.47	1.85	0.29	240	45EF-125-IPS
1 1/2"	IPS	6.54	2.01	0.51	240	45EF-150-IPS
2"	IPS	7.76	2.28	0.88	240	45EF-2-IPS
3"	IPS	9.53	2.83	2.07	240	45EF-3-IPS
4"	IPS	11.89	3.23	5.71	240	45EF-4-IPS
6"	IPS	14.17	3.94	8.64	220	45EF-6-IPS
8"	IPS	25.47	4.13	28.80	220	45EF-8-IPS

Electrofusion Specialty Fittings Electrofusion Tees



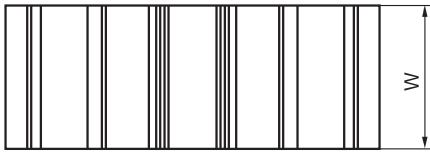
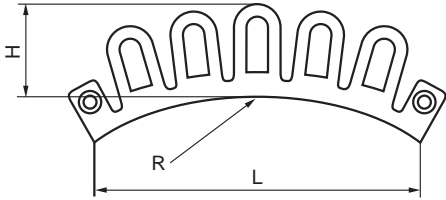
Nominal Pipe Size d		L	L1	Unit Weight in lbs.	PSI	Item Code
3/4"	IPS	4.25	1.46	1.59	240	TEF-075-IPS
1"	CTS	5.04	1.61	0.29	240	TEF-1-CTS
1"	IPS	5.04	1.61	0.29	240	TEF-1-IPS
1 1/4"	IPS	5.79	1.93	0.37	240	TEF-125-IPS
1 1/2"	IPS	6.38	1.93	0.68	240	TEF-125-IPS
2"	IPS	7.32	2.40	1.26	240	TEF-2-IPS
3"	IPS	10.04	2.91	3.26	240	TEF-3-IPS
4"	IPS	11.93	3.11	5.86	240	TEF-4-IPS
6"	IPS	12.89	6.70	17.85	240	TEF-6-IPS
8"	IPS	18.11	7.48	43.85	240	TEF-8-IPS

Electrofusion Specialty Fittings Electrofusion Reducers



Nominal Pipe Size d1 x d2	L	Unit Weight in lbs.	PSI	Item Code
1" IPS x 1/2" IPS	3.54	0.11	240	REF-1x050-IPSxIPS
1" IPS x 3/4" CTS	3.54	0.11	240	REF-1x075-IPSxCTS
1" IPS x 3/4" IPS	3.54	0.12	240	REF-1x075-IPSxIPS
1 1/4" IPS x 1" IPS	4.61	0.20	240	REF-125x1-IPSxIPS
1 1/2" IPS x 1" IPS	5.16	0.33	240	REF-150x1-IPSxIPS
2" IPS x 1" IPS	5.59	0.49	240	REF-2x1-IPSxIPS
2" IPS x 1 1/4" IPS	5.47	0.54	240	REF-2x125-IPSxIPS
2" IPS x 1 1/2" IPS	5.98	0.58	240	REF-2x150-IPSxIPS
3" IPS x 2" IPS	7.48	1.30	240	REF-3x2-IPSxIPS
4" IPS x 2" IPS	8.23	1.95	240	REF-4x2-IPSxIPS
4" IPS x 3" IPS	8.46	2.41	240	REF-4x3-IPSxIPS

Electrofusion Specialty Fittings Electrofusion Flex Restraints



Nominal Base Size	Base Norm	Axial Resistance	H	L	W	Unit Weight in lbs.	Item Code
6" - 63"	IPS/DIPS	9.500 lbs.	1.58	5.98	2.50	0.42	FLEX-EF

6" IPS/DIPS - 10" IPS/DIPS fusible to SDR 9 - SDR 17
 12" IPS/DIPS - 63" IPS fusible to SDR 9 to SDR 26

Electrofusion Couplers SDR 11 IPS Series

Water - 200 - 240 PSI / Gas - 150 PSI @ 73° F
Sustainable Maximum Operating Pressure
Designed for use on
IPS SDR 9 - SDR 17 HDPE Pipe

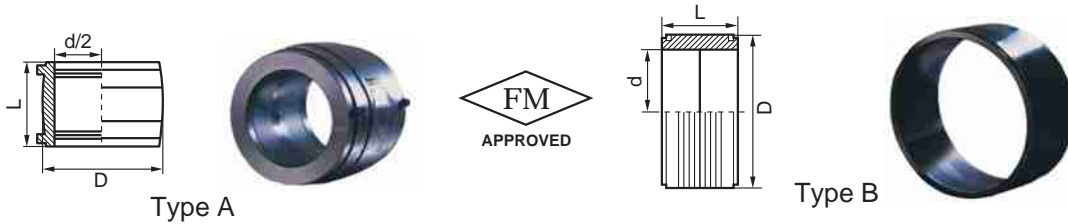


Nominal IPS Pipe Size	FM CLASS	d & d/2 inches	D inches	L inches	Unit Weight in lbs.	TYPE	Item Code	
1/2" IPS	NON FM	0.84	1.61	2.80	0.06	A	CT-0050IPS-240	
3/4" IPS	NON FM	1.05	1.61	2.80	0.11	A	CT-0075IPS-240	
1" IPS	NON FM	1.32	1.89	3.23	0.45	A	CT-01IPS-240	
1 1/4" IPS	NON FM	1.66	2.17	3.39	0.50	A	CT-0125IPS-240	
1 1/2" IPS	NON FM	1.90	2.64	3.86	0.50	A	CT-0150IPS-240	
2" IPS	CL150 & CL200	2.38	3.15	4.21	0.67	A	CT-02IPS-240	
3" IPS	CL150 & CL200	3.50	4.53	5.91	1.40	A	CT-03IPS-240	
4" IPS	CL150 & CL200	4.50	5.59	6.69	2.43	A	CT-04IPS-240	
5" IPS	CL150 & CL200	5.56	7.09	6.73	5.75	A	CT-05IPS-240	
6" IPS	CL150 & CL200	6.68	8.07	7.28	5.75	B	CT-06IPS-220	*
8" IPS	CL150 & CL200	8.63	10.83	8.03	9.40	B	CT-08IPS-220	*
10" IPS	CL150 & CL200	10.75	13.58	8.66	17.00	B	CT-010IPS-240	
12" IPS	CL150 & CL200	12.75	15.55	9.06	20.00	B	CT-012IPS-200	**
14" IPS (1)	CL150 & CL200	14.00	17.52	10.00	30.00	B	CT-014IPS-240	
16" IPS (1)	CL150 & CL200	16.00	19.49	11.81	39.81	B	CT-016IPS-200	**
18" IPS (1)(2)	CL150 & CL200	18.00	21.81	12.60	52.04	B	CT-018IPS-200	**
20" IPS (1)	CL150 & CL200	20.00	24.21	14.41	82.29	B	CT-020IPS-220	*
22" IPS (1)(2)	CL150 & CL200	22.00	27.17	15.75	108.88	B	CT-022IPS-220	*
24" IPS (1)(2)	CL150 & CL200	24.00	29.72	15.75	131.86	B	CT-024IPS-240	
26" IPS (1)(2)	CL150 & CL200	26.00	32.28	17.32	132.72	B	CT-026IPS-200	**
28" IPS (1)(2)	CL150 & CL200	28.00	34.65	17.52	198.58	B	CT-028IPS-220	*
30" IPS (1)(2)	CL150 & CL200	30.00	37.01	17.52	223.98	B	CT-030IPS-240	
32" IPS (1)(2)	CL150 & CL200	32.00	39.17	18.50	257.20	B	CT-032IPS-200	**
34" IPS (1)(2)	NOM FM	34.00	42.13	19.69	318.26	B	CT-034IPS-240	
36" IPS (1)(2)	NOM FM	36.00	44.09	19.69	310.57	B	CT-036IPS-240	

(1) Separate fusion zones * 220 PSI
(2) Requires the IntegriFuse EF Processor for installation ** 200 PSI

Electrofusion Couplers SDR 11 DIPS Series

Water - 200 - 240 PSI / Gas - 150 PSI @ 73° F
Sustainable Maximum Operating Pressure
Designed for use on
DIPS SDR 9 - SDR 17 HDPE Pipe



Nominal DIPS Pipe Size	FM CLASS	d & d/2 inches	D inches	L inches	Unit Weight in lbs.	TYPE	Item Code
4"	CL150 & CL200	4.80	6.30	6.60	3.00	A	CT-04DIPS-240
6"	CL150 & CL200	6.90	8.46	7.87	5.63	B	CT-06DIPS-240
8" (2)	CL150 & CL200	9.05	10.60	8.05	10.12	B	CT-08DIPS-200
10"	CL150 & CL200	11.10	13.00	8.66	16.00	B	CT-10DIPS-220 *
12"	CL150 & CL200	13.20	15.35	9.06	30.00	B	CT-12DIPS-240
14" DIPS (1)	CL150 & CL200	15.30	18.30	11.80	44.00	B	CT-14DIPS-240
16" DIPS (1)	CL150 & CL200	17.40	20.86	12.60	59.00	B	CT-16DIPS-240
18" DIPS (1)	CL150 & CL200	19.50	23.20	14.40	85.00	B	CT-18DIPS-220 *
20" DIPS (1)	CL150 & CL200	21.60	26.50	15.70	97.00	B	CT-20DIPS-220 *
24" DIPS (1)(2)	CL150 & CL200	25.80	30.50	16.50	116.00	B	CT-24DIPS-240
30" DIPS (1)(2)	CL150 & CL200	32.00	37.40	18.50	188.85	B	CT-30DIPS-240

(1) Separate fusion zones * 220 PSI
(2) Requires the IntegriFuse EF Processor for installation ** 200 PSI

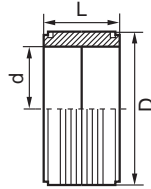
Electrofusion Couplers SDR 11 CTS Series

Water - 240 PSI / Gas - 150 PSI @ 73° F
Sustainable Maximum Operating Pressure
Designed for use on
CTS SDR 9 - SDR 17 HDPE Pipe

Nominal IPS Pipe Size	FM CLASS	d & d/2 inches	D inches	L inches	Unit Weight in lbs.	TYPE	Item Code
1/2" CTS	NON FM	0.84	1.61	2.80	0.06	A	CT-0050IPS-240
3/4" CTS	NON FM	1.05	1.61	2.80	0.11	A	CT-0075IPS-240
1" CTS	NON FM	1.32	1.89	3.23	0.45	A	CT-011IPS-240

Electrofusion Couplers SDR 17 IPS Series

Water - 160 PSI / Gas -100 PSI @ 73° F
Sustainable Maximum Operating Pressure
Designed for use on
IPS SDR 17 - SDR 21 HDPE Pipe

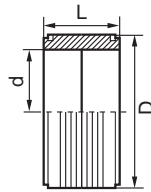


Nominal IPS Pipe Size	d & d/2 inches	D inches	L inches	Unit Weight in lbs.	Item Code
6"	6.68	8.07	7.28	4.08	CT-06IPS-160
8"	8.63	10.43	8.03	7.53	CT-08IPS-160
10"	10.75	12.60	8.66	10.18	CT-10IPS-160
12"	12.75	15.55	9.06	19.54	CT-12IPS-160
14" (1)	14.00	16.54	10.00	21.08	CT-14IPS-160
16" (1)	16.00	18.50	11.81	27.78	CT-16IPS-160
18" (1)(2)	18.00	20.87	12.60	38.21	CT-18IPS-160
20" (1)	20.00	23.23	14.41	54.75	CT-20IPS-160
22" (1)(2)	22.00	25.98	15.75	81.97	CT-22IPS-160
24" (1)	24.00	28.15	15.75	92.78	CT-24IPS-160
26" (1)(2)	26.00	30.71	17.32	120.21	CT-26IPS-160
28" (1)(2)	28.00	33.07	17.52	147.71	CT-28IPS-160
30" (1)(2)	30.00	35.83	17.52	182.95	CT-30IPS-160
32" (1)(2)	32.00	37.40	18.50	188.85	CT-32IPS-160
34" (1)(2)	34.00	39.96	19.69	186.84	CT-34IPS-160
36" (1)(2)	36.00	41.73	19.69	238.80	CT-36IPS-160
42" (1)(2)	42.00	48.03	19.69	291.02	CT-42IPS-160
48" (1)(2)	48.00	55.12	20.67	413.04	CT-48IPS-160
54" (1)(2)	54.00	62.99	21.65	620.18	CT-54IPS-160
63" (1)(2)	63.00	72.01	22.64	749.53	CT-63IPS-160

- (1) Separate fusion zones
(2) Requires the IntegriFuse EF Processor for installation

Electrofusion Couplers SDR 26 IPS Series

Water - 100 PSI / Gas - 60 PSI @73° F
Sustainable Maximum Operating Pressure
Designed for use on
IPS SDR 21 - SDR 32.5 HDPE Pipe

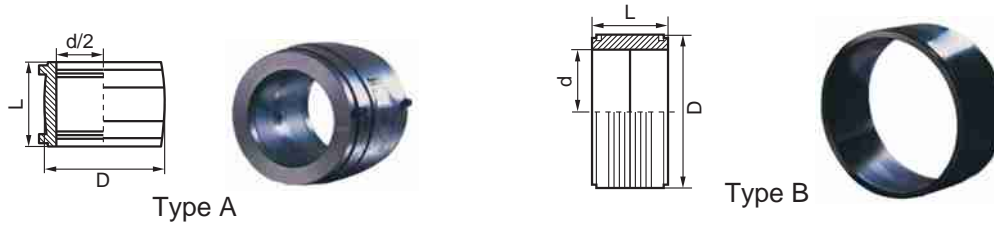


Nominal IPS Pipe Size	d & d/2 inches	D inches	L inches	Unit Weight in lbs.	TYPE	Item Code
6"	6.68	7.48	6.30	1.95	B	CT-06IPS-100
8"	8.63	9.65	6.50	3.30	B	CT-08IPS-100
10"	10.75	12.01	6.50	5.06	B	CT-10IPS-100
12"	12.75	14.56	6.50	8.78	B	CT-12IPS-100
14" (1)	14.00	15.35	7.09	7.67	B	CT-14IPS-100
16" (1)	16.00	18.50	8.66	20.37	B	CT-16IPS-100
18" (1)(2)	18.00	20.08	9.06	25.00	B	CT-18IPS-100
20" (1)	20.00	22.44	9.06	25.54	B	CT-20IPS-100
22" (1)(2)	22.00	24.21	9.84	27.40	B	CT-22IPS-100
24" (1)	24.00	26.77	13.78	52.79	B	CT-24IPS-100
26" (1)(2)	26.00	28.74	13.78	56.27	B	CT-26IPS-100
28" (1)(2)	28.00	30.71	13.78	59.66	B	CT-28IPS-100
30" (1)(2)	30.00	33.07	13.78	72.66	B	CT-30IPS-100
32" (1)(2)	32.00	35.43	13.78	86.85	B	CT-32IPS-100
34" (1)(2)	34.00	37.40	15.75	104.13	B	CT-34IPS-100
36" (1)(2)	36.00	40.55	19.69	186.72	B	CT-36IPS-100
42" (1)(2)	42.00	46.45	19.69	211.28	B	CT-42IPS-100
48" (1)(2)	48.00	53.15	19.69	279.16	B	CT-48IPS-100
54" (1)(2)	54.00	59.06	19.69	306.29	B	CT-54IPS-100
63" (1)(2)	63.00	68.90	19.69	416.89	B	CT-63IPS-100

(1) Separate fusion zones
(2) Requires the IntegriFuse EF Processor for installation

Electrofusion Couplers SDR 9 IPS Series

Water - 300 PSI @73° F
Sustainable Maximum Operating Pressure
Designed for use on
IPS SDR 9 HDPE Pipe

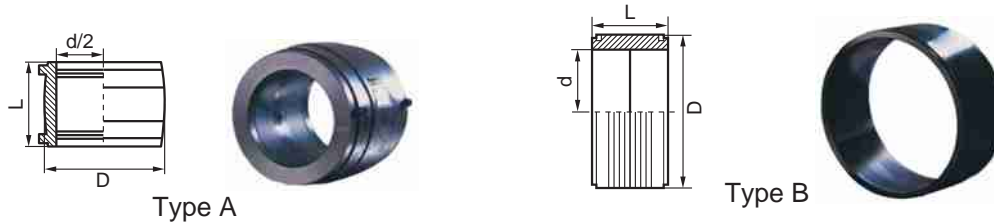


Nominal IPS Pipe Size	d & d/2 inches	D inches	L inches	Unit Weight in lbs.	TYPE	Item Code
2" (2)	2.38	3.82	4.65	1.13	A	CT-02IPS-300
3" (2)	3.50	5.59	6.57	3.40	A	CT-03IPS-300
4" (2)	4.50	6.26	6.77	3.49	A	CT-04IPS-300
5" (2)	5.56	8.03	7.28	6.65	A	CT-05IPS-300
6" (2)	6.68	9.13	8.35	8.83	A	CT-06IPS-300
8" (2)	8.63	12.01	9.49	18.03	B	CT-08IPS-300
10" (2)	10.75	14.57	8.82	23.20	B	CT-10IPS-300
12" (2)	12.75	16.54	9.13	27.57	B	CT-12IPS-300
14" (1)(2)	14.00	18.50	10.04	40.01	B	CT-14IPS-300
16" (1)(2)	16.00	20.67	11.81	55.06	B	CT-16IPS-300
18" (1)(2)	18.00	23.23	12.60	73.93	B	CT-18IPS-300
20" (1)(2)	20.00	25.98	14.37	107.66	B	CT-20IPS-300
22" (1)(2)	22.00	29.13	15.75	156.40	B	CT-22IPS-300
24" (1)(2)	24.00	32.68	16.54	221.40	B	CT-24IPS-300

(1) Separate fusion zones
(2) Requires the IntegriFuse EF Processor for installation

Electrofusion Couplers SDR 7 IPS Series

Water - 380 PSI @73° F
Sustainable Maximum Operating Pressure
Designed for use on
IPS SDR 7 - SDR 9 HDPE Pipe

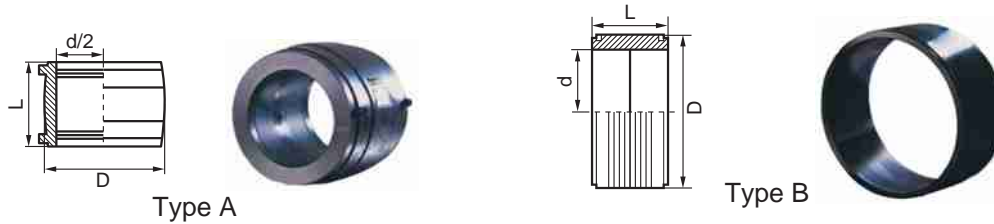


Nominal IPS Pipe Size	d & d/2 inches	D inches	L inches	TYPE	Unit Weight in lbs.	Item Code
2" (2)	2.38	3.82	4.65	A	1.13	CT-02IPS-380
3" (2)	3.50	5.59	6.57	A	3.40	CT-03IPS-380
4" (2)	4.50	6.26	6.77	A	3.49	CT-04IPS-380
5" (2)	5.56	8.03	7.28	A	6.65	CT-05IPS-380
6" (2)	6.68	9.13	8.35	A	8.83	CT-06IPS-380
8" (2)	8.63	12.20	8.35	B	16.94	CT-08IPS-380
10" (2)	10.75	15.35	8.82	B	28.86	CT-10IPS-380
12" (2)	12.75	17.32	9.13	B	34.20	CT-12IPS-380
14" (1)(2)	14.00	19.29	10.04	B	48.15	CT-14IPS-380
16" (1)(2)	16.00	21.77	11.81	B	70.10	CT-16IPS-380
18" (1)(2)	18.00	24.41	12.60	B	93.23	CT-18IPS-380
20" (1)(2)	20.00	27.17	14.37	B	132.22	CT-20IPS-380
22" (1)(2)	22.00	30.71	15.75	B	196.80	CT-22IPS-380

- (1) Separate fusion zones
(2) Requires the IntegriFuse EF Processor for installation

Electrofusion Couplers SDR 6 IPS Series

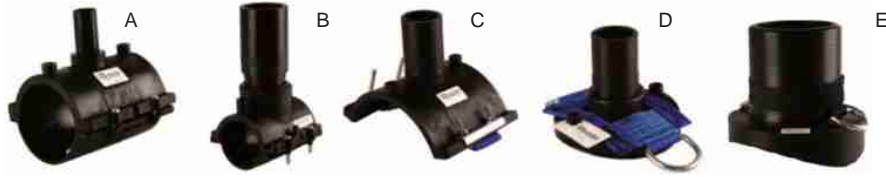
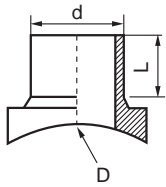
Water - 470 PSI @73° F
 Sustainable Maximum Operating Pressure
 Designed for use on
 IPS SDR 6 HDPE Pipe



Nominal IPS Pipe Size	d & d/2 inches	D inches	L inches	TYPE	Unit Weight in lbs.	Item Code
2" (2)	2.38	3.82	4.65	A	1.13	CT-02IPS-470
3" (2)	3.50	5.59	6.57	A	3.40	CT-03IPS-470
4" (2)	4.50	6.26	6.77	A	3.49	CT-04IPS-470
5" (2)	5.56	8.03	7.28	A	6.65	CT-05IPS-470
6" (2)	6.68	9.13	8.35	A	8.83	CT-06IPS-470
8" (2)	8.63	12.20	8.35	B	16.94	CT-08IPS-470
10" (2)	10.75	15.35	8.82	B	28.86	CT-10IPS-470
12" (2)	12.75	17.32	9.13	B	34.20	CT-12IPS-470
14" (1)(2)	14.00	19.29	10.04	B	48.15	CT-14IPS-470
16" (1)(2)	16.00	21.77	11.81	B	70.10	CT-16IPS-470
18" (1)(2)	18.00	24.41	12.60	B	93.23	CT-18IPS-470
20" (1)(2)	20.00	27.17	14.37	B	132.22	CT-20IPS-470

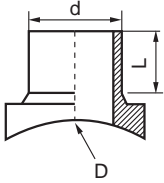
(1) Separate fusion zones
 (2) Requires the IntegriFuse EF Processor for installation

Electrofusion Couplers Electrofusion Branch Saddles



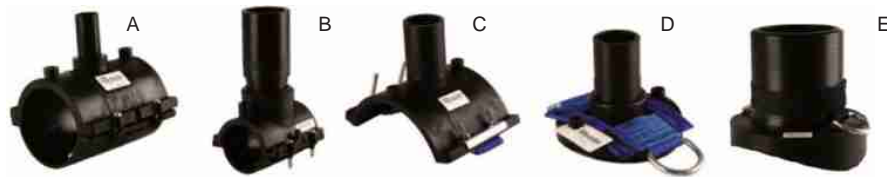
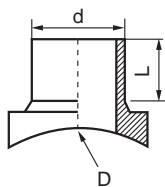
OUTLET (d)	OUTLET NORM	BASE (D)	BASE NORM	L	Unit Weight in lbs.	TYPE	PSI	Item Code
1"	CTS	1 1/4"	IPS	2.95	0.39	A	240	BST-125x1-IPSxCTS
1"	IPS	1 1/4"	IPS	2.95	0.40	A	240	BST-125x1-IPSxIPS
1"	CTS	1 1/2"	IPS	2.95	0.37	A	240	BST-150x1-IPSxCTS
1"	IPS	1 1/2"	IPS	2.95	0.41	A	240	BST-150x1-IPSxIPS
1"	CTS	2"	IPS	3.03	0.79	A	240	BST-2x1-IPSxCTS
1"	IPS	2"	IPS	3.03	0.86	A	240	BST-2x1-IPSxIPS
1"	CTS	3"	IPS	3.74	1.50	A	240	BST-3x1-IPSxCTS
1"	IPS	3"	IPS	3.74	1.52	A	240	BST-3x1-IPSxIPS
1"	CTS	4"	IPS	3.74	1.63	A	240	BST-4x1-IPSxCTS
1"	IPS	4"	IPS	3.74	1.65	A	240	BST-4x1-IPSxIPS
1"	CTS	6"	IPS	3.74	2.07	C	240	BST-6x1-IPSxCTS
1"	IPS	6"	IPS	3.74	2.09	C	240	BST-6x1-IPSxIPS
1"	CTS	8"	IPS	3.74	2.01	D	240	BST-8x1-IPSxCTS
1"	IPS	8"	IPS	3.74	2.03	D	240	BST-8x1-IPSxIPS
1"	CTS	10"	IPS	3.94	1.46	D	240	BST-10x1-IPSxCTS
1"	IPS	10"	IPS	3.94	1.48	D	240	BST-10x1-IPSxIPS
1"	CTS	12"	IPS	3.94	1.50	D	240	BST-12x1-IPSxCTS
1"	IPS	12"	IPS	5.12	1.52	D	240	BST-12x1-IPSxIPS
1"	CTS	14"	IPS	3.94	1.70	D	240	BST-14x1-IPSxCTS
1"	IPS	14"	IPS	5.12	1.72	D	240	BST-14x1-IPSxIPS
1"	CTS	16"	IPS	3.94	0.97	D	240	BST-16x1-IPSxCTS
1"	IPS	16"	IPS	5.12	0.99	D	240	BST-16x1-IPSxIPS
1"	CTS	18"	IPS	3.94	0.97	D	240	BST-18x1-IPSxCTS
1"	IPS	18"	IPS	5.12	0.99	D	240	BST-18x1-IPSxIPS
1"	CTS	4"	DIPS	3.74	1.65	B	240	BST-4x1-DIPSxCTS
1"	IPS	4"	DIPS	3.74	1.68	B	240	BST-4x1-DIPSxIPS
1"	CTS	6"	DIPS	3.74	2.09	C	240	BST-6x1-DIPSxCTS
1"	IPS	6"	DIPS	3.74	2.12	C	240	BST-6x1-DIPSxIPS
1"	CTS	8"	DIPS	3.94	2.01	D	240	BST-8x1-DIPSxCTS

Electrofusion Couplers Electrofusion Branch Saddles



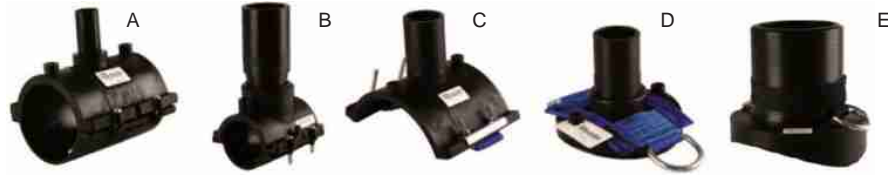
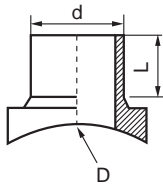
OUTLET (d)	OUTLET NORM	BASE (D)	BASE NORM	L	Unit Weight in lbs.	TYPE	PSI	Item Code
1"	IPS	8"	DIPS	5.12	2.03	D	240	BST-8x1-DIPSxIPS
1"	CTS	10"	DIPS	3.94	1.46	D	240	BST-10x1-DIPSxCTS
1"	IPS	10"	DIPS	5.12	1.48	D	240	BST-10x1-DIPSxIPS
1"	CTS	12"	DIPS	3.94	1.70	D	240	BST-12x1-DIPSxCTS
1"	IPS	12"	DIPS	5.12	1.72	D	240	BST-12x1-DIPSxIPS
1"	CTS	14"	DIPS	3.94	0.97	D	240	BST-14x1-DIPSxCTS
1"	IPS	14"	DIPS	5.12	0.99	D	240	BST-14x1-DIPSxIPS
1"	CTS	16"	DIPS	3.94	0.97	D	240	BST-16x1-DIPSxCTS
1"	IPS	16"	DIPS	5.12	0.99	D	240	BST-16x1-DIPSxIPS
1 1/4"	IPS	1 1/4"	IPS	2.95	0.33	A	240	BST-125x125-IPSxIPS
1 1/4"	CTS	1 1/4"	IPS	2.95	0.44	A	240	BST-125x125-IPSxCTS
1 1/4"	IPS	1 1/2"	IPS	2.95	0.41	A	240	BST-150x125-IPSxIPS
1 1/4"	CTS	1 1/2"	IPS	2.95	0.41	A	240	BST-150x125-IPSxCTS
1 1/4"	IPS	2"	IPS	3.03	0.88	A	240	BST-2x125-IPSxIPS
1 1/4"	CTS	2"	IPS	3.03	0.86	A	240	BST-2x125-IPSxCTS
1 1/4"	IPS	3"	IPS	3.74	1.54	A	240	BST-3x125-IPSxIPS
1 1/4"	CTS	3"	IPS	3.74	1.52	A	240	BST-3x125-IPSxCTS
1 1/4"	IPS	4"	IPS	3.74	1.68	A	240	BST-4x125-IPSxIPS
1 1/4"	CTS	4"	IPS	3.74	1.65	A	240	BST-4x125-IPSxCTS
1 1/4"	IPS	6"	IPS	3.74	2.12	C	240	BST-6x125-IPSxIPS
1 1/4"	CTS	6"	IPS	3.74	2.09	C	240	BST-6x125-IPSxCTS
1 1/4"	IPS	8"	IPS	3.74	2.05	D	240	BST-8x125-IPSxIPS
1 1/4"	CTS	8"	IPS	3.74	2.03	D	240	BST-8x125-IPSxCTS
1 1/4"	IPS	10"	IPS	4.13	1.50	D	240	BST-10x125-IPSxIPS
1 1/4"	CTS	10"	IPS	5.12	1.48	D	240	BST-10x125-IPSxCTS
1 1/4"	IPS	12"	IPS	4.13	1.54	D	240	BST-12x125-IPSxIPS
1 1/4"	CTS	12"	IPS	5.12	1.52	D	240	BST-12x125-IPSxCTS
1 1/4"	IPS	14"	IPS	4.13	1.68	D	240	BST-14x125-IPSxIPS
1 1/4"	CTS	14"	IPS	5.12	1.72	D	240	BST-14x125-IPSxCTS

Electrofusion Couplers Electrofusion Branch Saddles



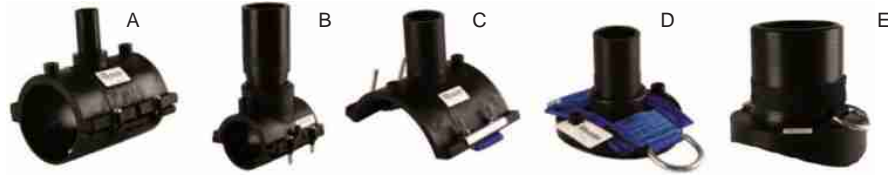
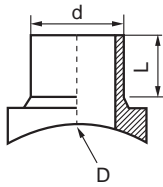
OUTLET (d)	OUTLET NORM	BASE (D)	BASE NORM	L	Unit Weight in lbs.	TYPE	PSI	Item Code
1 1/4"	IPS	16"	IPS	4.13	1.01	D	240	BST-16x125-IPSxIPS
1 1/4"	CTS	16"	IPS	5.12	0.99	D	240	BST-16x125-IPSxCTS
1 1/4"	IPS	18"	IPS	4.13	1.01	D	240	BST-18x125-IPSxIPS
1 1/4"	CTS	18"	IPS	5.12	0.99	D	240	BST-18x125-IPSxCTS
1 1/4"	IPS	4"	DIPS	3.74	1.72	B	240	BST-4x125-DIPSxIPS
1 1/4"	CTS	4"	DIPS	3.74	1.68	B	240	BST-4x125-DIPSxCTS
1 1/4"	IPS	6"	DIPS	3.74	2.14	C	240	BST-6x125-DIPSxIPS
1 1/4"	CTS	6"	DIPS	5.31	2.12	C	240	BST-6x125-DIPSxCTS
1 1/4"	IPS	8"	DIPS	4.13	2.05	D	240	BST-8x125-DIPSxIPS
1 1/4"	CTS	8"	DIPS	5.12	2.03	D	240	BST-8x125-DIPSxCTS
1 1/4"	IPS	10"	DIPS	4.13	1.50	D	240	BST-10x125-DIPSxIPS
1 1/4"	CTS	10"	DIPS	5.12	1.48	D	240	BST-10x125-DIPSxCTS
1 1/4"	IPS	12"	DIPS	4.13	1.68	D	240	BST-12x125-DIPSxIPS
1 1/4"	CTS	12"	DIPS	5.12	1.72	D	240	BST-12x125-DIPSxCTS
1 1/4"	IPS	14"	DIPS	4.13	1.01	D	240	BST-14x125-DIPSxIPS
1 1/4"	CTS	14"	DIPS	5.12	0.99	D	240	BST-14x125-DIPSxCTS
1 1/4"	IPS	16"	DIPS	4.13	1.01	D	240	BST-16x125-DIPSxIPS
1 1/4"	CTS	16"	DIPS	5.12	0.99	D	240	BST-16x125-DIPSxCTS
1 1/2"	IPS	1 1/2"	IPS	2.95	0.41	A	240	BST-150x150-IPSxIPS
1 1/2"	IPS	2"	IPS	4.92	1.65	A	240	BST-2x150-IPSxIPS
1 1/2"	IPS	3"	IPS	5.31	1.57	A	240	BST-3x150-IPSxIPS
1 1/2"	IPS	4"	IPS	5.31	1.70	A	240	BST-4x150-IPSxIPS
1 1/2"	IPS	6"	IPS	5.31	2.18	C	240	BST-6x150-IPSxIPS
1 1/2"	IPS	8"	IPS	5.31	2.07	D	240	BST-8x150-IPSxIPS
1 1/2"	IPS	10"	IPS	5.12	1.52	D	240	BST-10x150-IPSxIPS
1 1/2"	IPS	12"	IPS	5.12	1.54	D	240	BST-12x150-IPSxIPS
1 1/2"	IPS	14"	IPS	5.12	1.70	D	240	BST-14x150-IPSxIPS
1 1/2"	IPS	16"	IPS	5.12	1.15	D	240	BST-16x150-IPSxIPS
1 1/2"	IPS	18"	IPS	5.12	1.15	D	240	BST-18x150-IPSxIPS

Electrofusion Couplers Electrofusion Branch Saddles



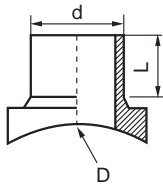
OUTLET (d)	OUTLET NORM	BASE (D)	BASE NORM	L	Unit Weight in lbs.	TYPE	PSI	Item Code
1 1/2"	IPS	4"	DIPS	5.31	1.74	B	240	BST-4x150-DIPSxIPS
1 1/2"	IPS	6"	DIPS	5.31	2.20	C	240	BST-6x150-DIPSxIPS
1 1/2"	IPS	8"	DIPS	5.12	2.07	D	240	BST-8x150-DIPSxIPS
1 1/2"	IPS	10"	DIPS	5.12	1.52	D	240	BST-10x150-DIPSxIPS
1 1/2"	IPS	12"	DIPS	5.12	1.70	D	240	BST-12x150-DIPSxIPS
1 1/2"	IPS	14"	DIPS	5.12	1.15	B	240	BST-14x150-DIPSxIPS
1 1/2"	IPS	16"	DIPS	5.12	1.15	D	240	BST-16x150-DIPSxIPS
2"	IPS	2"	IPS	4.92	1.76	A	240	BST-2x02-IPSxIPS
2"	IPS	3"	IPS	5.31	1.59	A	240	BST-3x2-IPSxIPS
2"	IPS	4"	IPS	5.31	1.72	A	240	BST-4x2-IPSxIPS
2"	IPS	6"	IPS	5.31	2.20	C	240	BST-6x2-IPSxIPS
2"	IPS	8"	IPS	5.31	2.09	D	240	BST-8x2-IPSxIPS
2"	IPS	10"	IPS	4.92	1.54	D	240	BST-10x2-IPSxIPS
2"	IPS	12"	IPS	4.92	1.54	D	240	BST-12x2-IPSxIPS
2"	IPS	14"	IPS	4.92	1.72	D	240	BST-14x2-IPSxIPS
2"	IPS	16"	IPS	4.92	1.15	D	240	BST-16x2-IPSxIPS
2"	IPS	18"	IPS	4.92	1.15	D	240	BST-18x2-IPSxIPS
2"	IPS	20"	IPS	4.92	1.15	D	240	BST-20x2-IPSxIPS
2"	IPS	22"	IPS	4.92	1.15	D	240	BST-22x2-IPSxIPS
2"	IPS	24"	IPS	4.92	1.15	D	240	BST-24x2-IPSxIPS
2"	IPS	26"	IPS	4.92	1.15	D	240	BST-26x2-IPSxIPS
2"	IPS	28"	IPS	4.92	1.15	D	240	BST-28x2-IPSxIPS
2"	IPS	30"	IPS	4.92	1.15	D	240	BST-30x2-IPSxIPS
2"	IPS	32"	IPS	4.92	1.15	D	240	BST-32x2-IPSxIPS
2"	IPS	36"	IPS	4.92	1.15	D	240	BST-36x2-IPSxIPS
2"	IPS	4"	DIPS	5.31	1.76	B	240	BST-4x2-DIPSxIPS
2"	IPS	6"	DIPS	5.31	2.23	C	240	BST-6x2-DIPSxIPS
2"	IPS	8"	DIPS	4.92	2.09	D	240	BST-8x2-DIPSxIPS
2"	IPS	10"	DIPS	4.92	1.46	D	240	BST-10x2-DIPSxIPS

Electrofusion Couplers Electrofusion Branch Saddles



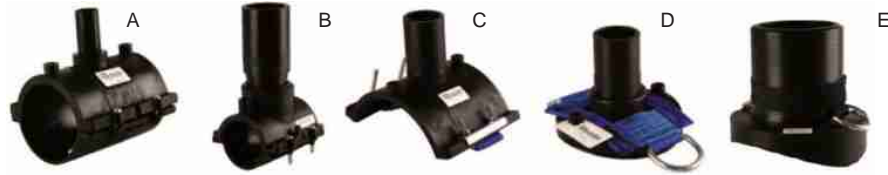
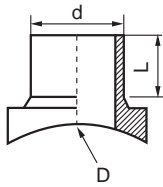
OUTLET (d)	OUTLET NORM	BASE (D)	BASE NORM	L	Unit Weight in lbs.	TYPE	PSI	Item Code
2"	IPS	12"	DIPS	4.92	1.72	D	240	BST-12x2-DIPSxIPS
2"	IPS	14"	DIPS	4.92	1.15	D	240	BST-12x2-DIPSxIPS
2"	IPS	16"	DIPS	4.92	1.15	D	240	BST-16x2-DIPSxIPS
3"	IPS	3"	IPS	3.54	1.32	E	240	BST-03x03-IPSxIPS
3"	IPS	4"	IPS	3.54	1.32	E	240	BST-04x03-IPSxIPS
3"	IPS	5"	IPS	3.54	1.32	E	240	BST-05x03-IPSxIPS
3"	IPS	6"	IPS	3.54	1.32	E	240	BST-06x03-IPSxIPS
3"	IPS	8"	IPS	3.54	1.32	E	240	BST-08x03-IPSxIPS
3"	IPS	10"	IPS	3.54	1.32	E	240	BST-10x03-IPSxIPS
3"	IPS	12"	IPS	3.54	1.32	E	240	BST-12x03-IPSxIPS
3"	IPS	14"	IPS	3.54	1.32	E	240	BST-14x03-IPSxIPS
3"	IPS	16"	IPS	3.54	1.32	E	240	BST-16x03-IPSxIPS
3"	IPS	18"	IPS	3.54	1.32	E	240	BST-18x03-IPSxIPS
3"	IPS	20"	IPS	3.54	1.32	E	240	BST-20x03-IPSxIPS
3"	IPS	22"	IPS	3.54	1.32	E	240	BST-22x03-IPSxIPS
3"	IPS	24"	IPS	3.54	1.32	E	240	BST-24x03-IPSxIPS
3"	IPS	30"	IPS	3.54	1.32	E	240	BST-30x03-IPSxIPS
3"	IPS	32"	IPS	3.54	1.32	E	240	BST-32x03-IPSxIPS
3"	IPS	36"	IPS	3.54	1.32	E	240	BST-36x03-IPSxIPS
3"	IPS	42"	IPS	3.54	1.32	E	240	BST-42x03-IPSxIPS
3"	IPS	48"	IPS	3.54	1.32	E	240	BST-48x03-IPSxIPS
3"	IPS	54"	IPS	3.54	1.32	E	240	BST-54x03-IPSxIPS
3"	IPS	63"	IPS	3.54	1.32	E	240	BST-63x03-IPSxIPS
4"	IPS	4"	IPS	3.54	1.32	E	200	BST-04x04-IPSxIPS
4"	IPS	5"	IPS	3.54	2.65	E	240	BST-05x04-IPSxIPS
4"	IPS	6"	IPS	3.54	2.65	E	240	BST-06x04-IPSxIPS
4"	IPS	8"	IPS	3.54	2.65	E	240	BST-08x04-IPSxIPS
4"	IPS	10"	IPS	3.54	2.65	E	240	BST-10x04-IPSxIPS
4"	IPS	12"	IPS	3.54	2.65	E	240	BST-12x04-IPSxIPS

Electrofusion Couplers Electrofusion Branch Saddles



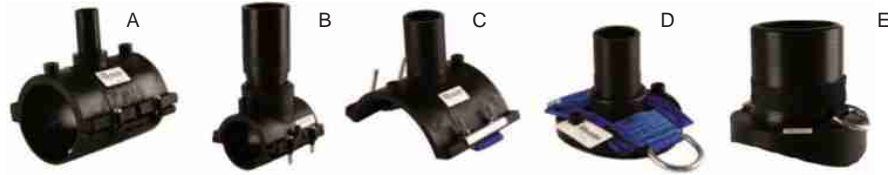
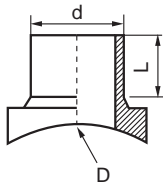
OUTLET (d)	OUTLET NORM	BASE (D)	BASE NORM	L	Unit Weight in lbs.	TYPE	PSI	Item Code
4"	IPS	14"	IPS	3.54	2.65	E	240	BST-14x04-IPSxIPS
4"	IPS	16"	IPS	3.54	2.65	E	240	BST-16x04-IPSxIPS
4"	IPS	18"	IPS	3.54	2.65	E	240	BST-18x04-IPSxIPS
4"	IPS	20"	IPS	3.54	2.65	E	240	BST-20x04-IPSxIPS
4"	IPS	22"	IPS	3.54	2.65	E	240	BST-22x04-IPSxIPS
4"	IPS	24"	IPS	3.54	2.65	E	240	BST-24x04-IPSxIPS
4"	IPS	30"	IPS	3.54	2.65	E	240	BST-30x04-IPSxIPS
4"	IPS	32"	IPS	3.54	2.65	E	240	BST-32x04-IPSxIPS
4"	IPS	36"	IPS	3.54	2.65	E	240	BST-36x04-IPSxIPS
4"	IPS	42"	IPS	3.54	2.65	E	240	BST-42x04-IPSxIPS
4"	IPS	48"	IPS	3.54	2.65	E	240	BST-48x04-IPSxIPS
4"	IPS	54"	IPS	3.54	2.65	E	240	BST-54x04-IPSxIPS
4"	IPS	63"	IPS	3.54	2.65	E	240	BST-63x04-IPSxIPS
4"	DIPS	6"	DIPS	3.54	2.65	E	240	BST-06x04-DIPSxDIPS
4"	DIPS	8"	DIPS	3.54	2.65	E	240	BST-08x04-DIPSxDIPS
4"	DIPS	10"	DIPS	3.54	2.65	E	240	BST-10 x04-DIPSxDIPS
4"	DIPS	12"	DIPS	3.54	2.65	E	240	BST-12 x04-DIPSxDIPS
4"	DIPS	14"	DIPS	3.54	2.65	E	240	BST-14 x04-DIPSxDIPS
4"	DIPS	16"	DIPS	3.54	2.65	E	240	BST-16 x04-DIPSxDIPS
4"	DIPS	18"	DIPS	3.54	2.65	E	240	BST-18 x04-DIPSxDIPS
4"	DIPS	24"	DIPS	3.54	2.65	E	240	BST-24 x04-DIPSxDIPS
4"	DIPS	30"	DIPS	3.54	2.65	E	240	BST-30 x04-DIPSxDIPS
4"	DIPS	36"	DIPS	3.54	2.65	E	240	BST-36 x04-DIPSxDIPS
4"	DIPS	42"	DIPS	3.54	2.65	E	240	BST-42 x04-DIPSxDIPS
4"	DIPS	48"	DIPS	3.54	2.65	E	240	BST-48x04-DIPSxDIPS
5"	IPS	6"	IPS	4.33	3.97	E	240	BST-06x05-IPSxIPS
5"	IPS	8"	IPS	4.33	3.97	E	240	BST-08x05-IPSxIPS
5"	IPS	10"	IPS	4.33	3.97	E	240	BST-10x05-IPSxIPS
5"	IPS	12"	IPS	4.33	3.97	E	240	BST-12x05-IPSxIPS

Electrofusion Couplers Electrofusion Branch Saddles



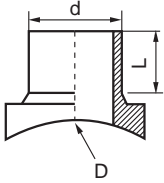
OUTLET (d)	OUTLET NORM	BASE (D)	BASE NORM	L	Unit Weight in lbs.	TYPE	PSI	Item Code
5"	IPS	14"	IPS	4.33	3.97	E	240	BST-14x05-IPSxIPS
5"	IPS	18"	IPS	4.33	3.97	E	240	BST-18x05-IPSxIPS
5"	IPS	20"	IPS	4.33	3.97	E	240	BST-20x05-IPSxIPS
5"	IPS	22"	IPS	4.33	3.97	E	240	BST-20x05-IPSxIPS
5"	IPS	24"	IPS	4.33	3.97	E	240	BST-24x05-IPSxIPS
5"	IPS	30"	IPS	4.33	3.97	E	240	BST-30x05-IPSxIPS
5"	IPS	32"	IPS	4.33	3.97	E	240	BST-32x05-IPSxIPS
5"	IPS	36"	IPS	4.33	3.97	E	240	BST-36x05-IPSxIPS
5"	IPS	42"	IPS	4.33	3.97	E	240	BST-42x05-IPSxIPS
5"	IPS	48"	IPS	4.33	3.97	E	240	BST-48x05-IPSxIPS
5"	IPS	54"	IPS	4.33	3.97	E	240	BST-54x05-IPSxIPS
5"	IPS	63"	IPS	4.33	3.97	E	240	BST-63x05-IPSxIPS
6"	IPS	6"	IPS	4.33	3.97	E	240	BST-06x06-IPSxIPS
6"	IPS	8"	IPS	5.91	5.07	E	240	BST-08x06-IPSxIPS
6"	IPS	10"	IPS	5.91	5.07	E	240	BST-10x06-IPSxIPS
6"	IPS	12"	IPS	5.91	5.07	E	240	BST-12x06-IPSxIPS
6"	IPS	14"	IPS	5.91	5.07	E	240	BST-14x06-IPSxIPS
6"	IPS	16"	IPS	5.91	5.07	E	240	BST-16x06-IPSxIPS
6"	IPS	18"	IPS	5.91	5.07	E	240	BST-18x06-IPSxIPS
6"	IPS	20"	IPS	5.91	5.07	E	240	BST-20x06-IPSxIPS
6"	IPS	22"	IPS	5.91	5.07	E	240	BST-22x06-IPSxIPS
6"	IPS	24"	IPS	5.91	5.07	E	240	BST-24x06-IPSxIPS
6"	IPS	30"	IPS	5.91	5.07	E	240	BST-30x06-IPSxIPS
6"	IPS	32"	IPS	5.91	5.07	E	240	BST-32x06-IPSxIPS
6"	IPS	36"	IPS	5.91	5.07	E	240	BST-36x06-IPSxIPS
6"	IPS	42"	IPS	5.91	5.07	E	240	BST-42x06-IPSxIPS
6"	IPS	48"	IPS	5.91	5.07	E	240	BST-48x06-IPSxIPS
6"	IPS	54"	IPS	5.91	5.07	E	240	BST-54x06-IPSxIPS
6"	IPS	63"	IPS	5.91	5.07	E	240	BST-63x06-IPSxIPS

Electrofusion Couplers Electrofusion Branch Saddles



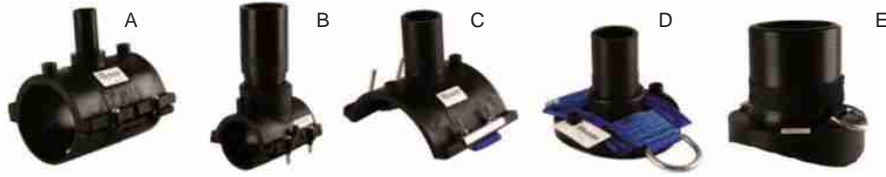
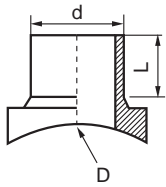
OUTLET (d)	OUTLET NORM	BASE (D)	BASE NORM	L	Unit Weight in lbs.	TYPE	PSI	Item Code
6"	DIPS	8"	DIPS	5.91	5.07	E	240	BST-08x06-DIPSxDIPS
6"	DIPS	10"	DIPS	5.91	5.07	E	240	BST-10x06-DIPSxDIPS
6"	DIPS	12"	DIPS	5.91	5.07	E	240	BST-12x06-DIPSxDIPS
6"	DIPS	14"	DIPS	5.91	5.07	E	240	BST-14x06-DIPSxDIPS
6"	DIPS	16"	DIPS	5.91	5.07	E	240	BST-16x06-DIPSxDIPS
6"	DIPS	18"	DIPS	5.91	5.07	E	240	BST-18x06-DIPSxDIPS
6"	DIPS	20"	DIPS	5.91	5.07	E	240	BST-20x06-DIPSxDIPS
6"	DIPS	24"	DIPS	5.91	5.07	E	240	BST-24x06-DIPSxDIPS
6"	DIPS	30"	DIPS	5.91	5.07	E	240	BST-30x06-DIPSxDIPS
6"	DIPS	36"	DIPS	5.91	5.07	E	240	BST-36x06-DIPSxDIPS
6"	DIPS	42"	DIPS	5.91	5.07	E	240	BST-42x06-DIPSxDIPS
6"	DIPS	48"	DIPS	5.91	5.07	E	240	BST-48x06-DIPSxDIPS
8"	IPS	8"	IPS	5.91	5.07	E	240	BST-08x08-IPSxIPS
8"	IPS	10"	IPS	5.91	9.92	E	240	BST-10x08-IPSxIPS
8"	IPS	12"	IPS	5.91	9.92	E	240	BST-12x08-IPSxIPS
8"	IPS	14"	IPS	5.91	9.92	E	240	BST-14x08-IPSxIPS
8"	IPS	16"	IPS	5.91	9.92	E	240	BST-16x08-IPSxIPS
8"	IPS	18"	IPS	5.91	9.92	E	240	BST-18x08-IPSxIPS
8"	IPS	20"	IPS	5.91	9.92	E	240	BST-20x08-IPSxIPS
8"	IPS	22"	IPS	5.91	9.92	E	240	BST-22x08-IPSxIPS
8"	IPS	24"	IPS	5.91	9.92	E	240	BST-24x08-IPSxIPS
8"	IPS	30"	IPS	5.91	9.92	E	240	BST-30x08-IPSxIPS
8"	IPS	32"	IPS	5.91	9.92	E	240	BST-32x08-IPSxIPS
8"	IPS	36"	IPS	5.91	9.92	E	240	BST-36x08-IPSxIPS
8"	IPS	42"	IPS	5.91	9.92	E	240	BST-42x08-IPSxIPS
8"	IPS	48"	IPS	5.91	9.92	E	240	BST-48x08-IPSxIPS
8"	IPS	54"	IPS	5.91	9.92	E	240	BST-54x08-IPSxIPS
8"	IPS	63"	IPS	5.91	9.92	E	240	BST-63x08-IPSxIPS
8" (2)	DIPS	10"	DIPS	5.91	5.07	E	240	BST-10x08-DIPSxDIPS

Electrofusion Couplers Electrofusion Branch Saddles



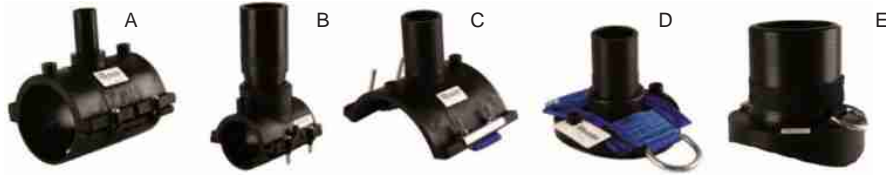
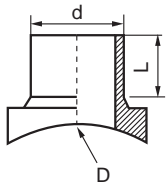
OUTLET (d)	OUTLET NORM	BASE (D)	BASE NORM	L	Unit Weight in lbs.	TYPE	PSI	Item Code
8" (2)	DIPS	12"	DIPS	5.91	5.07	E	240	BST-12x08-DIPSxDIPS
8" (2)	DIPS	14"	DIPS	5.91	5.07	E	240	BST-14x08-DIPSxDIPS
8" (2)	DIPS	16"	DIPS	5.91	5.07	E	240	BST-16x08-DIPSxDIPS
8" (2)	DIPS	18"	DIPS	5.91	5.07	E	240	BST-18x08-DIPSxDIPS
8" (2)	DIPS	20"	DIPS	5.91	5.07	E	240	BST-20x08-DIPSxDIPS
8" (2)	DIPS	24"	DIPS	5.91	5.07	E	240	BST-24x08-DIPSxDIPS
8" (2)	DIPS	36"	DIPS	5.91	5.07	E	240	BST-36x08-DIPSxDIPS
8" (2)	DIPS	42"	DIPS	5.91	5.07	E	240	BST-42x08-DIPSxDIPS
8" (2)	DIPS	48"	DIPS	5.91	18.74	E	240	BST-48x08-DIPSxDIPS
10" (2)	IPS	12"	IPS	7.28	18.74	E	160	BST-12x10-IPSxIPS
10" (2)	IPS	14"	IPS	7.28	18.74	E	160	BST-14x10-IPSxIPS
10" (2)	IPS	16"	IPS	7.28	18.74	E	160	BST-16x10-IPSxIPS
10" (2)	IPS	18"	IPS	7.28	18.74	E	160	BST-18x10-IPSxIPS
10" (2)	IPS	20"	IPS	7.28	18.74	E	160	BST-20x10-IPSxIPS
10" (2)	IPS	22"	IPS	7.28	18.74	E	160	BST-22x10-IPSxIPS
10" (2)	IPS	24"	IPS	7.28	18.74	E	160	BST-24x10-IPSxIPS
10" (2)	IPS	30"	IPS	7.28	18.74	E	160	BST-30x10-IPSxIPS
10" (2)	IPS	32"	IPS	7.28	18.74	E	160	BST-32x10-IPSxIPS
10" (2)	IPS	36"	IPS	7.28	18.74	E	160	BST-36x10-IPSxIPS
10" (2)	IPS	36"	IPS	7.28	18.74	E	160	BST-36x10-IPSxIPS
10" (2)	IPS	42"	IPS	7.28	18.74	E	160	BST-42x10-IPSxIPS
10" (2)	IPS	48"	IPS	7.28	18.74	E	160	BST-48x10-IPSxIPS
10" (2)	IPS	54"	IPS	7.28	18.74	E	160	BST-54x10-IPSxIPS
10" (2)	IPS	63"	IPS	7.28	18.74	E	160	BST-63x10-IPSxIPS
10" (2)	DIPS	12"	DIPS	5.91	5.07	E	240	BST-12x10-DIPSxDIPS
10" (2)	DIPS	16"	DIPS	5.91	5.07	E	240	BST-16x10-DIPSxDIPS
10" (2)	DIPS	18"	DIPS	5.91	5.07	E	240	BST-18x10-DIPSxDIPS
10" (2)	DIPS	20"	DIPS	5.91	5.07	E	240	BST-20x10-DIPSxDIPS
10" (2)	DIPS	24"	DIPS	5.91	5.07	E	240	BST-24x10-DIPSxDIPS

Electrofusion Couplers Electrofusion Branch Saddles



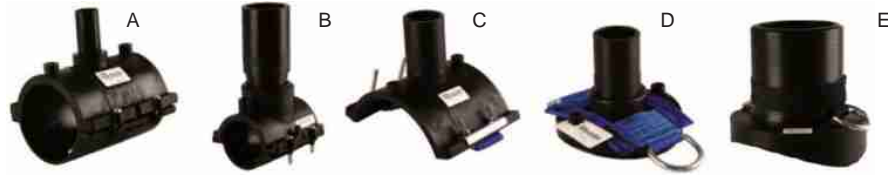
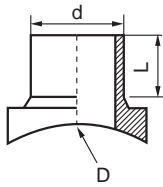
OUTLET (d)	OUTLET NORM	BASE (D)	BASE NORM	L	Unit Weight in lbs.	TYPE	PSI	Item Code
10" (2)	DIPS	36"	DIPS	7.87	18.74	E	160	BST-36x10-DIPSxDIPS
10" (2)	DIPS	48"	DIPS	7.87	18.74	E	160	BST-48x10-DIPSxDIPS
12" (2)	IPS	14"	IPS	7.87	42.77	E	160	BST-14x12-IPSxIPS
12" (2)	IPS	16"	IPS	7.87	42.77	E	160	BST-16x12-IPSxIPS
12" (2)	IPS	18"	IPS	7.87	42.77	E	160	BST-18x12-IPSxIPS
12" (2)	IPS	20"	IPS	7.87	15.87	E	160	BST-20x12-IPSxIPS
12" (2)	IPS	22"	IPS	7.87	15.87	E	160	BST-22x12-IPSxIPS
12" (2)	IPS	24"	IPS	7.87	15.87	E	160	BST-24x12-IPSxIPS
12" (2)	IPS	30"	IPS	7.87	15.87	E	160	BST-30x12-IPSxIPS
12" (2)	IPS	32"	IPS	7.87	15.87	E	160	BST-32x12-IPSxIPS
12" (2)	IPS	36"	IPS	7.87	15.87	E	160	BST-36x12-IPSxIPS
12" (2)	IPS	42"	IPS	7.87	15.87	E	160	BST-42x12-IPSxIPS
12" (2)	IPS	48"	IPS	7.87	15.87	E	160	BST-48x12-IPSxIPS
12" (2)	IPS	54"	IPS	7.87	15.87	E	160	BST-54x12-IPSxIPS
12" (2)	IPS	63"	IPS	7.87	15.87	E	160	BST-63x12-IPSxIPS
12" (2)	DIPS	14"	DIPS	7.87	42.77	E	160	BST-14x12-DIPSxDIPS
12" (2)	DIPS	16"	DIPS	7.87	42.77	E	160	BST-16x12-DIPSxDIPS
12" (2)	DIPS	18"	DIPS	7.87	42.77	E	160	BST-18x12-DIPSxDIPS
12" (2)	DIPS	20"	DIPS	7.87	42.77	E	160	BST-20x12-DIPSxDIPS
12" (2)	DIPS	24"	DIPS	7.87	42.77	E	160	BST-24x12-DIPSxDIPS
12" (2)	DIPS	36"	DIPS	7.87	42.77	E	160	BST-36x12-DIPSxDIPS
12" (2)	DIPS	42"	DIPS	7.87	42.77	E	160	BST-42x12-DIPSxDIPS
12" (2)	DIPS	48"	DIPS	7.87	42.77	E	160	BST-48x12-DIPSxDIPS
14" (2)	IPS	16"	IPS	7.87	42.77	E	50	BST-16x14-IPSxIPS
14" (2)	IPS	18"	IPS	7.87	42.77	E	100	BST-18x14-IPSxIPS
14" (2)	IPS	20"	IPS	7.87	19.35	E	100	BST-20x14-IPSxIPS
14" (2)	IPS	22"	IPS	7.87	19.35	E	100	BST-22x14-IPSxIPS
14" (2)	IPS	24"	IPS	7.87	19.35	E	100	BST-24x14-IPSxIPS
14" (2)	IPS	30"	IPS	7.87	19.35	E	100	BST-30x14-IPSxIPS

Electrofusion Couplers Electrofusion Branch Saddles



OUTLET (d)	OUTLET NORM	BASE (D)	BASE NORM	L	Unit Weight in lbs.	TYPE	PSI	Item Code
14" (2)	IPS	32"	IPS	7.87	19.35	E	100	BST-32x14-IPSxIPS
14" (2)	IPS	36"	IPS	7.87	19.35	E	100	BST-36x14-IPSxIPS
14" (2)	IPS	42"	IPS	7.87	19.35	E	100	BST-42x14-IPSxIPS
14" (2)	IPS	48"	IPS	7.87	19.35	E	100	BST-48x14-IPSxIPS
14" (2)	IPS	54"	IPS	7.87	19.35	E	100	BST-54x14-IPSxIPS
14" (2)	IPS	63"	IPS	7.87	19.35	E	100	BST-63x14-IPSxIPS
14" (2)	DIPS	16"	DIPS	8.27	59.30	E	100	BST-16x14-DIPSxDIPS
14" (2)	DIPS	18"	DIPS	8.27	59.30	E	100	BST-18x14-DIPSxDIPS
14" (2)	DIPS	20"	DIPS	8.27	59.30	E	100	BST-20x14-DIPSxDIPS
14" (2)	DIPS	24"	DIPS	8.27	59.30	E	100	BST-24x14-DIPSxDIPS
14" (2)	DIPS	36"	DIPS	8.27	59.30	E	100	BST-36x14-DIPSxDIPS
14" (2)	DIPS	42"	DIPS	8.27	59.30	E	100	BST-42x14-DIPSxDIPS
14" (2)	DIPS	48"	DIPS	8.27	59.30	E	100	BST-48x14-DIPSxDIPS
16" (2)	IPS	18"	IPS	7.87	42.77	E	100	BST-18x16-IPSxIPS
16" (2)	IPS	20"	IPS	9.05	24.85	E	100	BST-20x16-IPSxIPS
16" (2)	IPS	24"	IPS	9.05	24.85	E	100	BST-24x16-IPSxIPS
16" (2)	IPS	22"	IPS	9.05	24.85	E	100	BST-22x16-IPSxIPS
16" (2)	IPS	24"	IPS	9.05	24.85	E	100	BST-24x16-IPSxIPS
16" (2)	IPS	30"	IPS	9.05	24.85	E	100	BST-30x16-IPSxIPS
16" (2)	IPS	32"	IPS	9.05	24.85	E	100	BST-32x16-IPSxIPS
16" (2)	IPS	36"	IPS	9.05	24.85	E	100	BST-36x16-IPSxIPS
16" (2)	IPS	42"	IPS	9.05	24.85	E	100	BST-42x14-IPSxIPS
16" (2)	IPS	48"	IPS	9.05	24.85	E	100	BST-48x16-IPSxIPS
16" (2)	IPS	54"	IPS	9.05	24.85	E	100	BST-54x16-IPSxIPS
16" (2)	IPS	63"	IPS	9.05	24.85	E	100	BST-63x16-IPSxIPS
16" (2)	DIPS	18"	DIPS	9.05	77.71	E	100	BST-18x14-DIPSxDIPS
16" (2)	DIPS	20"	DIPS	9.05	77.71	E	100	BST-20x16-DIPSxDIPS
16" (2)	DIPS	24"	DIPS	9.05	77.71	E	100	BST-24x16-DIPSxDIPS
16" (2)	DIPS	30"	DIPS	9.05	77.71	E	100	BST-30x16-DIPSxDIPS

Electrofusion Couplers Electrofusion Branch Saddles

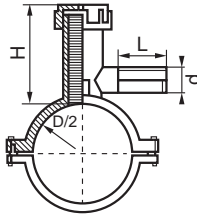


OUTLET (d)	OUTLET NORM	BASE (D)	BASE NORM	L	Unit Weight in lbs.	TYPE	PSI	Item Code
16" (2)	DIPS	36"	DIPS	9.06	77.71	E	100	BST-36x16-DIPSxDIPS
16" (2)	DIPS	42"	DIPS	9.06	77.71	E	100	BST-42x16-DIPSxDIPS
16" (2)	DIPS	48"	DIPS	9.06	77.71	E	100	BST-48x16-DIPSxDIPS
18" (2)	IPS	20"	IPS	9.05	32.45	E	100	BST-20x18-IPSxIPS
18" (2)	IPS	22"	IPS	9.05	32.45	E	100	BST-22x18-IPSxIPS
18" (2)	IPS	24"	IPS	9.05	32.45	E	100	BST-24x18-IPSxIPS
18" (2)	IPS	30"	IPS	9.05	32.45	E	100	BST-30x18-IPSxIPS
18" (2)	IPS	32"	IPS	9.05	32.45	E	100	BST-32x18-IPSxIPS
18" (2)	IPS	36"	IPS	9.05	9.05	E	100	BST-36x18-IPSxIPS
18" (2)	IPS	42"	IPS	9.05	32.45	E	100	BST-42x18-IPSxIPS
18" (2)	IPS	48"	IPS	9.05	32.45	E	100	BST-48x18-IPSxIPS
18" (2)	IPS	54"	IPS	9.05	32.45	E	100	BST-54x18-IPSxIPS
18" (2)	IPS	63"	IPS	9.05	32.45	E	100	BST-63x18-IPSxIPS
18" (2)	DIPS	20"	DIPS	9.05	110.80	E	100	BST-20x18-DIPSxDIPS
18" (2)	DIPS	24"	DIPS	9.05	110.80	E	100	BST-24x18-DIPSxDIPS
18" (2)	DIPS	30"	DIPS	9.05	110.80	E	100	BST-30x18-DIPSxDIPS
18" (2)	DIPS	36"	DIPS	9.05	110.80	E	100	BST-36x18-DIPSxDIPS
18" (2)	DIPS	42"	DIPS	9.05	110.80	E	100	BST-42x18-DIPSxDIPS
18" (2)	DIPS	48"	DIPS	9.05	110.80	E	100	BST-48x18-DIPSxDIPS
20" (2)	IPS	24"	IPS	7.87	28.60	E	100	BST-24x20-IPSxIPS
20" (2)	IPS	30"	IPS	7.87	28.60	E	100	BST-30x20-IPSxIPS
20" (2)	IPS	32"	IPS	7.87	28.60	E	100	BST-32x20-IPSxIPS
20" (2)	IPS	36"	IPS	7.87	28.60	E	100	BST-36x20-IPSxIPS
20" (2)	IPS	42"	IPS	7.87	28.60	E	100	BST-42x20-IPSxIPS
20" (2)	IPS	48"	IPS	7.87	28.60	E	100	BST-48x20-IPSxIPS
20" (2)	IPS	54"	IPS	7.87	28.60	E	100	BST-54x20-IPSxIPS
20" (2)	IPS	63"	IPS	7.87	28.60	E	100	BST-63x20-IPSxIPS

(2) Requires the IntegriFuse EF Processor for installation

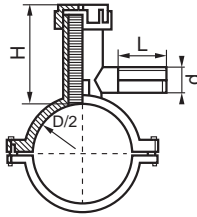
Larger Sizes Available to Order

Electrofusion Couplers Electrofusion Tapping Tees



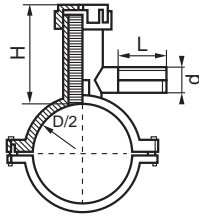
OUTLET (d)	OUTLET NORM	BASE (D)	BASE NORM	H	L	Unit Weight in lbs.	TYPE	Item Code
1/2"	CTS	1 1/4"	IPS	4.13	1.73	0.64	A	TTT-125x050-IPSxCTS
1/2"	IPS	1 1/4"	IPS	4.13	1.73	0.64	A	TTT-125x050-IPSxIPS
1/2"	CTS	1 1/2"	IPS	4.13	2.05	1.23	A	TTT-150x050-IPSxCTS
1/2"	IPS	1 1/2"	IPS	4.13	2.05	1.23	A	TTT-150x050-IPSxIPS
1/2"	CTS	2"	IPS	4.13	2.05	1.23	A	TTT-2x050-IPSxCTS
1/2"	IPS	2"	IPS	4.13	2.05	1.23	A	TTT-2x050-IPSxIPS
1/2"	CTS	3"	IPS	5.31	1.85	2.16	A	TTT-3x050-IPSxCTS
1/2"	IPS	3"	IPS	5.31	1.85	2.16	A	TTT-3x050-IPSxIPS
1/2"	CTS	4"	IPS	5.31	1.89	2.27	A	TTT-4x050-IPSxCTS
1/2"	IPS	4"	IPS	5.31	1.89	2.27	A	TTT-4x050-IPSxIPS
1/2"	CTS	6"	IPS	5.31	2.01	2.91	C	TTT-6x050-IPSxCTS
1/2"	IPS	6"	IPS	5.31	2.01	2.91	C	TTT-6x050-IPSxIPS
1/2"	CTS	8"	IPS	5.31	2.01	2.91	D	TTT-8x050-IPSxCTS
1/2"	IPS	8"	IPS	5.31	2.01	2.91	D	TTT-8x050-IPSxIPS
1/2"	CTS	4"	DIPS	5.31	1.89	2.27	A	TTT-4x050-DIPSxCTS
1/2"	IPS	4"	DIPS	5.31	1.89	2.27	A	TTT-4x050-DIPSxIPS
1/2"	CTS	6"	DIPS	5.31	2.01	2.91	C	TTT-6x050-DIPSxCTS
1/2"	IPS	6"	DIPS	5.31	2.01	2.91	C	TTT-6x050-DIPSxIPS
1/2"	CTS	8"	DIPS	5.31	2.01	2.91	D	TTT-8x050-DIPSxCTS
1/2"	IPS	8"	DIPS	5.31	2.01	2.91	D	TTT-8x050-DIPSxIPS
3/4"	CTS	1 1/4"	IPS	4.13	1.73	0.64	A	TTT-125x075-IPSxCTS
3/4"	IPS	1 1/4"	IPS	4.13	1.73	0.68	A	TTT-125x075-IPSxIPS
3/4"	CTS	1 1/2"	IPS	4.13	2.05	1.23	A	TTT-150x075-IPSxCTS
3/4"	IPS	1 1/2"	IPS	4.13	2.13	1.27	A	TTT-150x075-IPSxIPS
3/4"	CTS	2"	IPS	4.13	2.05	1.23	A	TTT-2x075-IPSxCTS

Electrofusion Couplers Electrofusion Tapping Tees



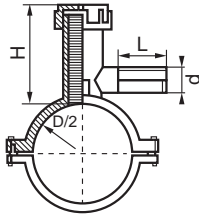
OUTLET (d)	OUTLET NORM	BASE (D)	BASE NORM	H	L	Unit Weight in lbs.	TYPE	Item Code
3/4"	IPS	2"	IPS	4.13	2.13	1.27	A	TTT-2x075-IPSxIPS
3/4"	CTS	3"	IPS	5.31	1.85	2.16	A	TTT-3x075-IPSxCTS
3/4"	IPS	3"	IPS	5.31	2.05	2.18	A	TTT-3x075-IPSxIPS
3/4"	CTS	4"	IPS	5.31	1.89	2.27	A	TTT-4x075-IPSxCTS
3/4"	IPS	4"	IPS	5.31	2.17	2.29	A	TTT-4x075-IPSxIPS
3/4"	CTS	6"	IPS	5.31	2.01	2.91	C	TTT-6x075-IPSxCTS
3/4"	IPS	6"	IPS	5.31	1.89	2.83	C	TTT-6x075-IPSxIPS
3/4"	CTS	8"	IPS	5.31	2.01	2.91	D	TTT-8x075-IPSxCTS
3/4"	IPS	8"	IPS	5.31	1.89	2.69	D	TTT-8x075-IPSxIPS
3/4"	CTS	4"	DIPS	5.31	1.89	2.27	A	TTT-4x075-DIPSxCTS
3/4"	IPS	4"	DIPS	5.31	2.17	2.29	A	TTT-4x075-DIPSxIPS
3/4"	CTS	6"	DIPS	5.31	2.01	2.91	C	TTT-6x075-DIPSxCTS
3/4"	IPS	6"	DIPS	5.31	1.89	2.69	C	TTT-6x075-DIPSxIPS
3/4"	CTS	8"	DIPS	5.31	2.01	2.91	D	TTT-8x075-DIPSxCTS
3/4"	IPS	8"	DIPS	5.31	1.89	2.69	D	TTT-8x075-DIPSxIPS
1"	CTS	1 1/4"	IPS	4.13	1.73	0.71	A	TTT-125x1-IPSxCTS
1"	IPS	1 1/4"	IPS	4.13	1.85	0.71	A	TTT-125x1-IPSxIPS
1"	CTS	1 1/2"	IPS	4.13	2.13	1.30	A	TTT-150x1-IPSxCTS
1"	IPS	1 1/2"	IPS	4.13	3.35	1.30	A	TTT-150x1-IPSxIPS
1"	CTS	2"	IPS	4.13	2.13	1.30	A	TTT-2x1-IPSxCTS
1"	IPS	2"	IPS	4.13	3.35	1.30	A	TTT-2x1-IPSxIPS
1"	CTS	3"	IPS	5.31	2.05	2.18	A	TTT-3x1-IPSxCTS
1"	IPS	3"	IPS	5.31	2.52	2.20	A	TTT-3x1-IPSxIPS
1"	CTS	4"	IPS	5.31	2.17	2.29	A	TTT-4x1-IPSxCTS
1"	IPS	4"	IPS	5.31	2.68	2.36	A	TTT-4x1-IPSxIPS

Electrofusion Couplers Electrofusion Tapping Tees



OUTLET (d)	OUTLET NORM	BASE (D)	BASE NORM	H	L	Unit Weight in lbs.	TYPE	Item Code
3/4"	CTS	6"	IPS	5.31	1.89	2.83	C	TTT-6x1-IPSxCTS
1"	IPS	6"	IPS	5.31	3.27	2.82	C	TTT-6x1-IPSxIPS
1"	CTS	8"	IPS	5.31	1.89	2.69	D	TTT-8x1-IPSxCTS
1"	IPS	8"	IPS	5.31	3.27	2.65	D	TTT-8x1-IPSxIPS
1"	CTS	4"	DIPS	5.31	2.17	2.29	A	TTT-4x1-DIPSxCTS
1"	IPS	4"	DIPS	5.31	2.68	2.36	A	TTT-4x1-DIPSxIPS
1"	CTS	6"	DIPS	5.31	1.89	2.69	C	TTT-6x1-DIPSxCTS
1"	IPS	6"	DIPS	5.31	3.27	2.65	C	TTT-6x1-DIPSxIPS
1"	CTS	8"	DIPS	5.31	1.89	2.69	D	TTT-8x1-DIPSxCTS
1"	IPS	8"	DIPS	5.31	3.27	2.65	D	TTT-8x1-DIPSxIPS
1 1/4"	IPS	1 1/4"	IPS	4.13	1.85	0.71	A	TTT-125x125-IPSxIPS
1 1/4"	CTS	1 1/4"	IPS	4.13	1.85	0.71	A	TTT-125x1-IPSxCTS
1 1/4"	IPS	1 1/2"	IPS	4.13	3.54	1.30	A	TTT-150x125-IPSxIPS
1 1/4"	CTS	1 1/2"	IPS	4.13	3.35	1.30	A	TTT-150x125-IPSxCTS
1 1/4"	IPS	2"	IPS	4.13	3.54	1.30	A	TTT-2x125-IPSxIPS
1 1/4"	CTS	2"	IPS	4.13	3.35	1.30	A	TTT-2x125-IPSxCTS
1 1/4"	IPS	3"	IPS	5.31	3.50	2.23	A	TTT-3x125-IPSxIPS
1 1/4"	CTS	3"	IPS	5.31	2.52	2.20	A	TTT-3x125-IPSxCTS
1 1/4"	IPS	4"	IPS	5.31	2.76	2.38	A	TTT-4x125-IPSxIPS
1 1/4"	CTS	4"	IPS	5.31	2.68	2.36	A	TTT-4x125-IPSxCTS
1 1/4"	IPS	6"	IPS	5.31	3.50	2.89	C	TTT-6x125-IPSxIPS
1 1/4"	CTS	6"	IPS	5.31	3.27	2.82	C	TTT-6x125-IPSxCTS
1 1/4"	IPS	8"	IPS	5.31	3.50	2.65	D	TTT-8x125-IPSxIPS
1 1/4"	CTS	8"	IPS	5.31		2.65	D	TTT-8x125-IPSxCTS
1 1/4"	IPS	4"	DIPS	5.31	2.76	2.37	A	TTT-4x125-DIPSxIPS

Electrofusion Couplers Electrofusion Tapping Tees



OUTLET (d)	OUTLET NORM	BASE (D)	BASE NORM	H	L	Unit Weight in lbs.	TYPE	Item Code
1 1/4"	CTS	4"	DIPS	5.31	2.68	2.36	A	TTT-4x125-DIPSxCTS
1 1/4"	IPS	6"	DIPS	5.31	3.50	2.65	C	TTT-6x125-DIPSxIPS
1 1/4"	CTS	6"	DIPS	5.31	3.27	2.65	C	TTT-6x125-DIPSxCTS
1 1/4"	IPS	8"	DIPS	5.31	3.50	2.65	D	TTT-8x125-DIPSxIPS
1 1/4"	CTS	8"	DIPS	5.31	3.27	2.65	D	TTT-8x125-DIPSxCTS
1 1/2"	IPS	1 1/2"	IPS	4.13	TBA	TBA	A	TTT-150x150-IPSxIPS
1 1/2"	IPS	2"	IPS	7.87	4.17	2.43	A	TTT-2x150-IPSxIPS
1 1/2"	IPS	3"	IPS	7.09	3.94	3.20	A	TTT-3x150-IPSxIPS
1 1/2"	IPS	4"	IPS	5.31	2.95	3.31	A	TTT-4x150-IPSxIPS
1 1/2"	IPS	6"	IPS	7.09	4.06	3.82	C	TTT-6x150-IPSxIPS
1 1/2"	IPS	8"	IPS	7.09	3.39	3.57	D	TTT-8x150-IPSxIPS
1 1/2"	IPS	4"	DIPS	7.09	2.95	3.31	A	TTT-4x150-DIPSxIPS
1 1/2"	IPS	6"	DIPS	7.09	3.39	3.57	C	TTT-6x150-DIPSxIPS
1 1/2"	IPS	8"	DIPS	7.09	3.39	3.57	D	TTT-8x150-DIPSxIPS
2"	IPS	2"	IPS	7.87	4.17	2.65	A	TTT-2x2-IPSxIPS
2"	IPS	3"	IPS	7.09	4.33	3.28	A	TTT-3x2-IPSxIPS
2"	IPS	4"	IPS	7.09	2.95	3.31	A	TTT-4x2-IPSxIPS
2"	IPS	6"	IPS	7.09	4.33	4.01	C	TTT-6x2-IPSxIPS
2"	IPS	8"	IPS	7.09	4.45	3.79	D	TTT-8x2-IPSxIPS
2"	IPS	4"	DIPS	7.09	2.95	3.31	A	TTT-4x2-DIPSxIPS
2"	IPS	6"	DIPS	7.09	3.39	3.79	C	TTT-6x2-DIPSxIPS
2"	IPS	8"	DIPS	7.09	4.45	3.79	D	TTT-8x2-DIPSxIPS

Equipment & Tools

Electrofusion Processor



Fusion Capacity	Scanner	Supply Voltage	Output Voltage	Item Code
1/2" - 63" Electrofusion Fitting	Pen Scanner	120 V	8 VAC to 48 VAC	INT-EFP-PS
1/2" - 63" Electrofusion Fitting	SmartScan	120 V	8 VAC to 48 VAC	INT-EFP-SS
1/2" - 63" Electrofusion Fitting	SmartScan with GPS	120 V	8 VAC to 48 VAC	INT-EFP-GPS

Fuses All Brands and Sizes of Universally Barcoded Electrofusion Fittings

Electrofusion Processor



Model	Size	Item Code
INT-052	1/2" IPS - 2" IPS	SCR - INT - 052
INT-36	3" IPS - 6" DIPS	SCR - INT - 36
INT-816	8" IPS - 16" DIPS	SCR - INT - 816
INT-1832	18" IPS - 32" IPS	SCR - INT - 1832

Equipment & Tools

Re-Rounding Tools



Size	Inserts	Type	Item Code
63" IPS	Master	Hydraulic	RRC-INT-63
54" IPS	Master	Hydraulic	RRC-INT-54
48" IPS	Master	Hydraulic	RRC-INT-48
36" DIPS	36" IPS, 34" IPS	Hydraulic	RRC-INT-36
32" IPS/30" DIPS	30" IPS, 28" IPS	Hydraulic	RRC-INT-32
24" DIPS	24" IPS, 22" DIPS, 20" DIPS, 20" IPS	Hydraulic	RRC-INT-24
18" DIPS	18" IPS, 16" DIPS, 16" IPS, 14" DIPS, 14" IPS	Hydraulic	RRC-INT-18
12" DIPS	12" IPS, 10" DIPS, 10" IPS, 8" DIPS, 8" IPS	Manual	RRC-INT-12

Most Sizes Also Available for Rental

Alignment Clamps



Size	Inserts	Type	Item Code
6" IPS	6" x 5", 6" x 4"	Manual	ALC-INT-6
4" IPS	4" x 3" Master, 4" x 2" Master (1.5", 1.25", 1", .75", .5")	Manual	ALC-INT-4
3" IPS	3" x 2" Master (1.5", 1.25", 1", .75", .5")	Manual	ALC-INT-3
2" IPS	1.5", 1.25", 1", .75", .5"	Manual	ALC-INT-2