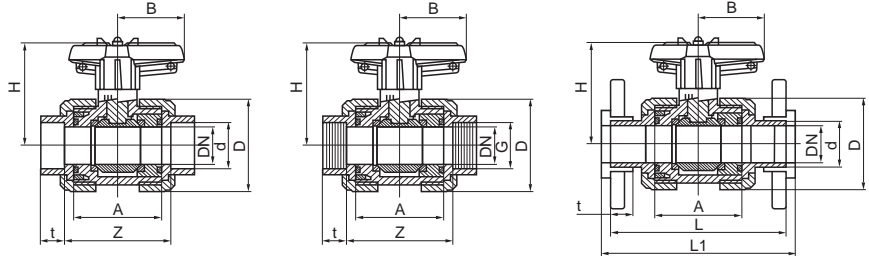
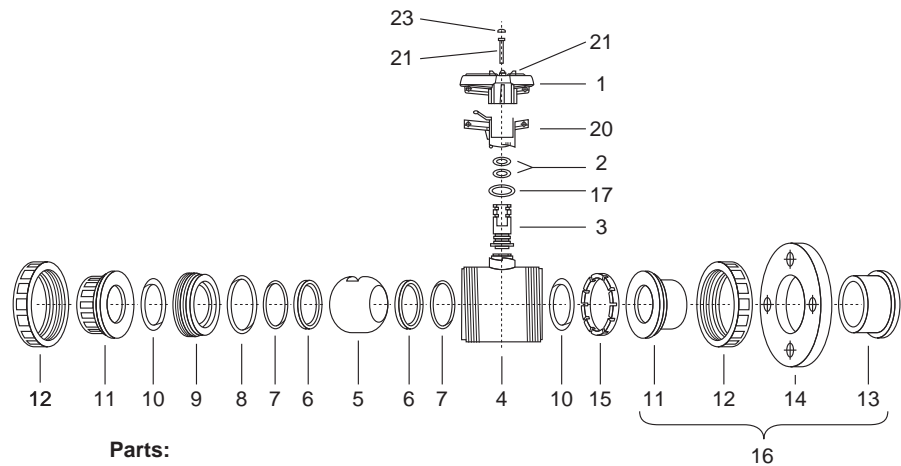


## 2-Way Ball Valve S4 - Hand Operated PP



<b>d</b>	16	20	25	32	40	50	63	75	90	110
<b>DN</b>	10	15	20	25	32	40	50	65	80	100
<b>G</b>	3/8"	1/2"	3/4"	1"	1 1/4"	1 1/2"	2"	2 1/2"	3"	4"
<b>L</b>	114,0	124,0	144,0	154,0	174,0	194,0	224,0	284,0	300,0	340,0
<b>L1</b>	120,0	130,0	150,0	160,0	180,0	200,0	230,0	290,0	310,0	350,0
<b>A</b>	62,0	62,0	69,0	73,0	83,0	94,0	108,0	133,0	160,0	160,0
<b>Z</b>	71,0	67,5	79,0	84,0	96,0	114,0	134,0	162,0	208,0	207,0
<b>t</b>	14,5	16,0	17,0	19,5	22,0	25,0	29,0	34,5	38,5	44,0
<b>D</b>	52,5	52,5	62,0	69,5	84,0	100,0	120,5	155,0	187,0	187,0
<b>H</b>	71,5	71,5	77,0	80,5	98,5	106,5	115,5	142,0	160,0	160,0
<b>B</b>	40,0	40,0	51,5	51,5	64,0	73,0	85,0	110,0	132,0	132,0
<b>PN</b>	10	10	10	10	10	10	10	10	6	6
<b>Weight</b>	0,16	0,16	0,23	0,28	0,47	0,74	1,11	2,28	3,87	3,87

Dimensions in mm



- Parts:**
- 01. Handle
  - 02. O-Ring
  - 03. Shaft
  - 04. Body
  - 05. Ball
  - 06. Ball seating joint
  - 07. O-Ring
  - 08. O-Ring
  - 09. Thrust collar
  - 10. O-Ring
  - 11. Connections
  - 12. Union nut
  - 13. Flange adaptor
  - 14. Flange
  - 15. Retaining ring
  - 16. Connection set
  - 17. O-Ring
  - 20. Spring loaded locking sleeve
  - 21. Spigot
  - 22. Screw
  - 23. Cover for screw



**General:**

- Sealing material: EPDM / FPM
- Ball seating joint: PTFE (Teflon®)
- Body material: PVC-u PP - PVDF
- Dimensions: DN 10 / d16 - 3/8" - DN 80 / d110 - 4"

**Operating pressure:**

DN 10 / 3/8" - DN 65 / 2 1/2" 10 bar  
 DN 80 / 3" - DN 80 / 4" 6 bar

**Connections:**

- PP Fusion socket (ASTM, DIN)
- PE, PP Fusion spigot (DIN)
- Threaded socket (BSP, NPT)
- Flange (ANSI, ASA, DIN, JIS)

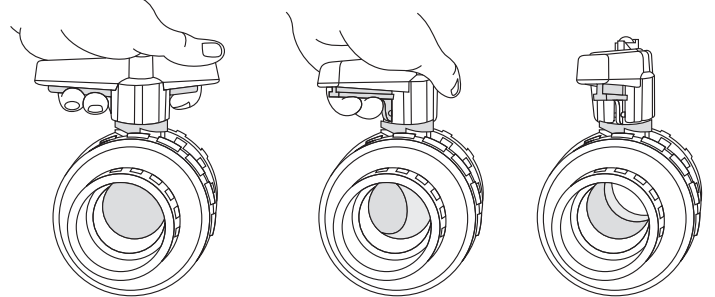
**Technical specification:**

For example:  
 TYPE PRAHER, DIN 3442  
 PP2-way ball valve S4DN10 d 15  
 PP fusion socket ASTM  
 Sealing material EPDM  
 Ball seating joint PTFE (Teflon®)  
 Safety handle system

**Features:**

- safety handle system
- radial installation or removal
- ball doubled sided blocked
- circulatory independent of direction
- full sectional area of flow (nominal bore)
- floating ball
- ball seating joints in PTFE (Teflon®)

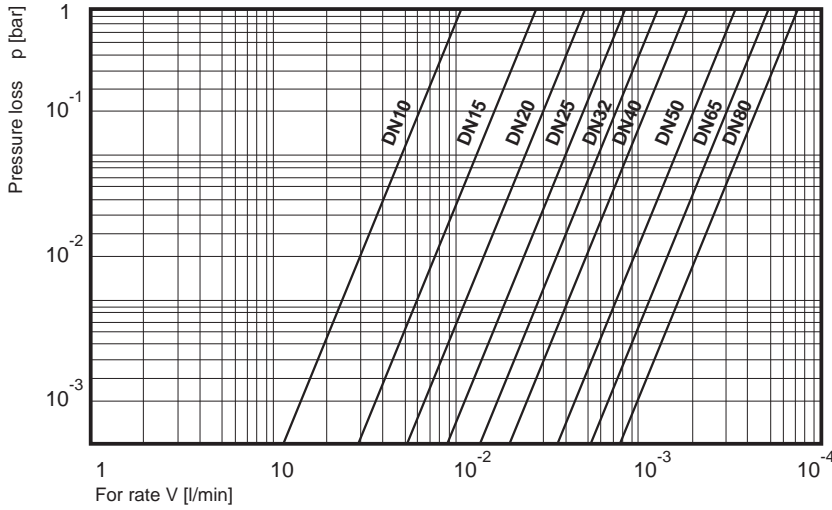
**Safety handle system**



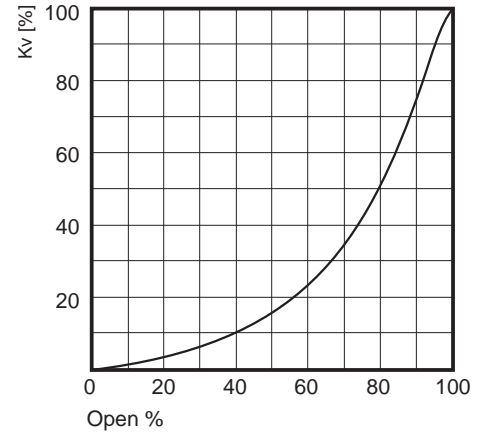
Subjects to technical modification

## 2-Way Ball Valve S4 - Hand Operated PP

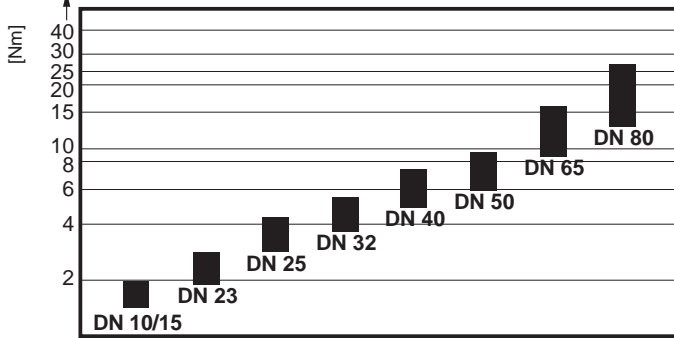
Flow - pressure loss diagram



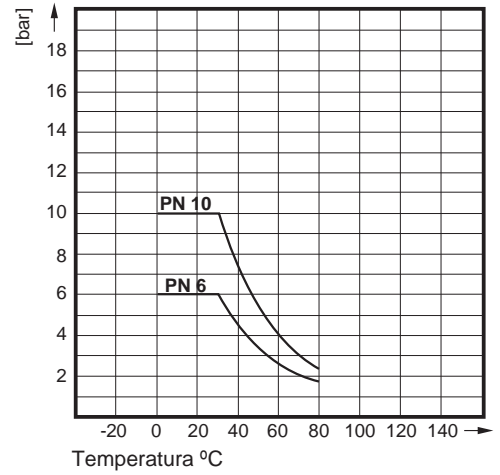
Flow characteristic



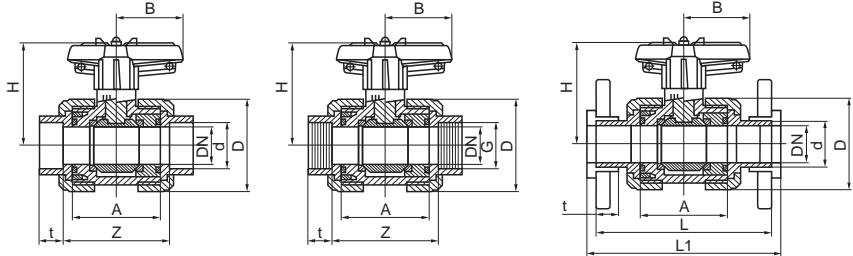
Torque



Pressure - Temperature Diagram



## 2-Way Ball Valve S4 - Hand Operated PVDF



<b>d</b>	16	20	25	32	40	50	63	75	90	110
<b>DN</b>	10	15	20	25	32	40	50	65	80	100
<b>G</b>	3/8"	1/2"	3/4"	1"	1 1/4"	1 1/2"	2"	2 1/2"	3"	4"
<b>L</b>	114,0	124,0	144,0	154,0	174,0	194,0	224,0	284,0	300,0	340,0
<b>L1</b>	120,0	130,0	150,0	160,0	180,0	200,0	230,0	290,0	310,0	350,0
<b>A</b>	62,0	62,0	69,0	73,0	83,0	94,0	108,0	133,0	160,0	160,0
<b>Z</b>	70,0	67,0	79,0	83,0	95,0	114,0	134,0	147,0	211,0	167,0
<b>t</b>	14,5	16,0	17,0	19,5	22,0	25,0	29,0	34,5	38,5	44,0
<b>D</b>	51,8	51,8	61,5	68,5	83,5	98,0	118,0	151,0	183,0	183,0
<b>H</b>	71,5	71,5	77,0	80,5	98,5	106,5	115,5	142,0	160,0	160,0
<b>B</b>	40,0	40,0	51,5	51,5	64,0	73,0	85,0	110,0	132,0	132,0
<b>PN</b>	16	16	16	16	16	16	16	16	10	6
<b>Weight</b>	0,25	0,25	0,38	0,49	0,81	1,22	1,91	3,82	6,43	6,43

Dimensions in mm



### General:

- Sealing material: FPM
- Ball seating joint: PTFE / PE
- Body material: PVC - PP - PVDF
- Dimensions: DN10/d16 - DN80/d110

### Operating pressure:

DN 10 / 3/8" - DN 65 2 1/2"	16 bar
DN 80 / 3"	10 bar
DN 80 / 4"	6 bar

### Connections:

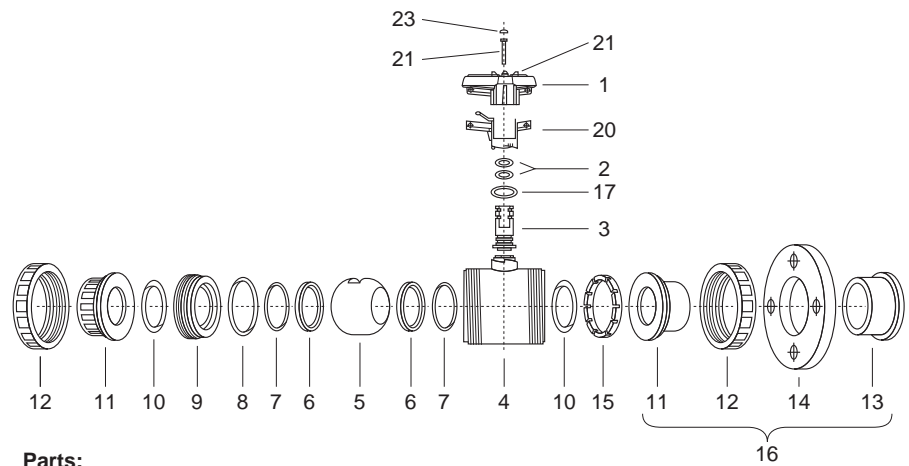
- PVDF Fusion socket (ASTM, DIN)
- PVDF Fusion spigot (DIN)
- Threaded connection (BSP, NPT)
- Flange (ANSI, ASA, DIN, JIS)

### Technical specification:

For example:  
 TYPE PRAHER, DIN 3442  
 PVDF 2-way ball valve S4DN10 d 16  
 PVDF Fusion spigot ASTM  
 Sealing material FPM  
 Ball seating joint PTFE  
 Max. Operating pressure 16 bar  
 Safety handle system

### Features:

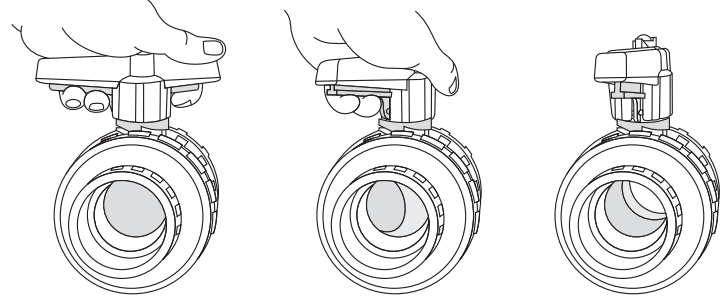
- safety handle system
- radial installation or removal
- ball doublesided blocked
- circulatory independent of direction
- full sectional area of flow (nominal bore)
- floating ball
- ball seating joints in PTFE (Teflon®)



### Parts:

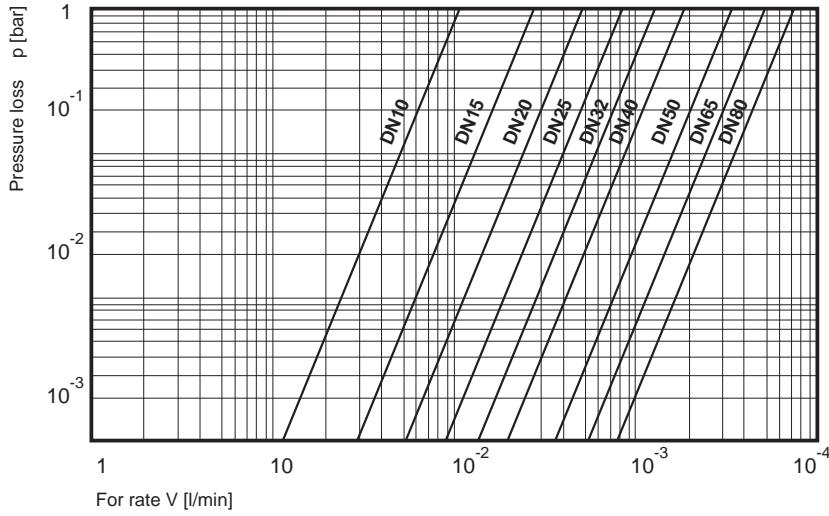
- |                        |                                  |
|------------------------|----------------------------------|
| 01. Handle             | 11. Connections                  |
| 02. O-Ring             | 12. Union nut                    |
| 03. Shaft              | 13. Flange adaptor               |
| 04. Body               | 14. Flange                       |
| 05. Ball               | 15. Retaining ring               |
| 06. Ball seating joint | 16. Connection set               |
| 07. O-Ring             | 17. O-Ring                       |
| 08. O-Ring             | 20. Spring loaded locking sleeve |
| 09. Thrust collar      | 21. Spigot                       |
| 10. O-Ring             | 22. Screw                        |
|                        | 23. Cover for screw              |

### Safety handle system

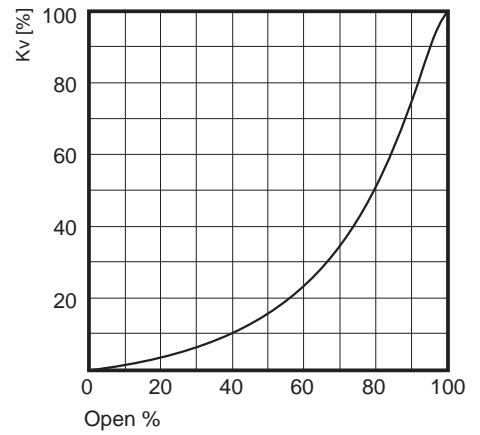


## 2-Way Ball Valve S4 - Hand Operated PVDF

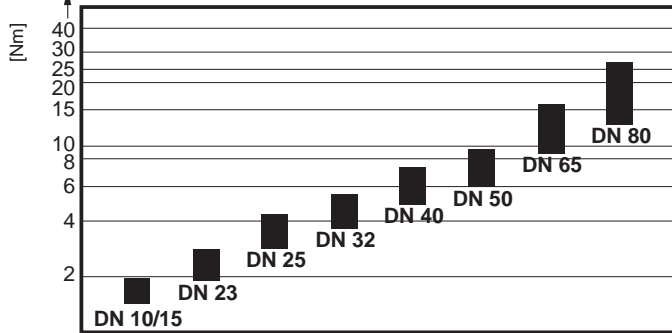
Flow - pressure loss diagram



Flow characteristic



Torque



Pressure - Temperature Diagram

