

Check Valve / Horizontal Type



JW300
SIZE: 1" - 8"

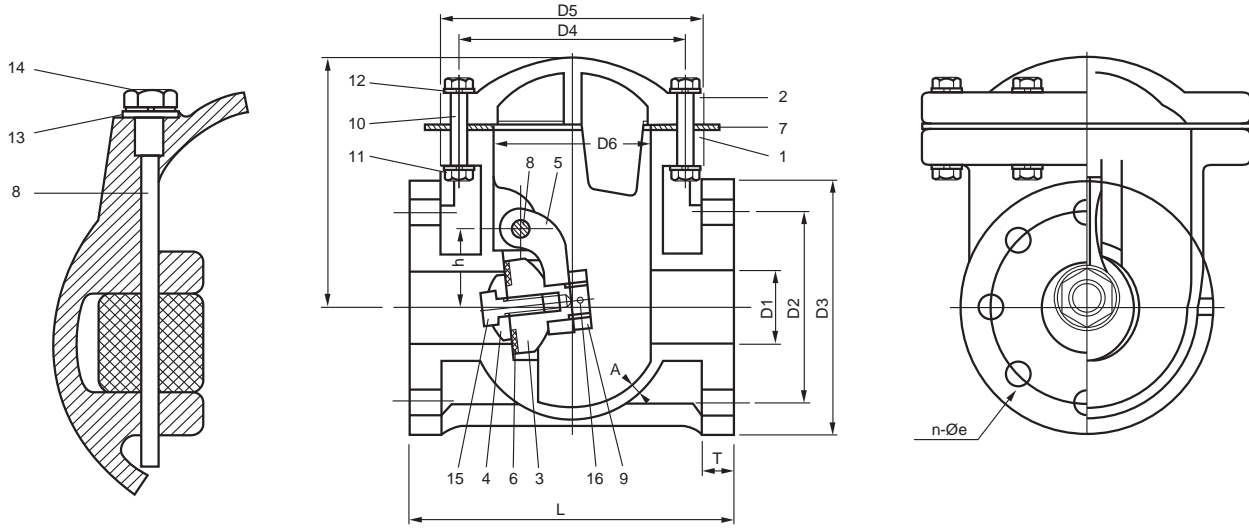
Materials of Construction

No.	Parts	Pcs.	Materials	No.	Parts	Pcs.	Materials
1	Body	1	UPVC, PP, CPVC, PPG, PVDF	9	Disc Holder	1	PP, PVDF
2	Bonnet	1	UPVC, CPVC, PPG, PVDF	10	Bolts	6...DN15-50 8...DN65-125 10...DN150 12...DN200	SUS304
4	Sheet Gasket Holder	1	UPVC, PP, CPVC, PPG, PVDF	12	Washers		SUS304
5	Swing Arms	1	UPVC, PP, CPVC, PPG, PVDF	13	O'ring	1	EPDM, VITON
6	Disc Gasket	1	EPDM, VITON, TEFLON	14	Shaft Holder	1	PVDF
7	Bonnet Gasket	1	EPDM, VITON, TEFLON	15	Set Bolts	1...DN15-80 3...DN100-125 10...DN150-200	
8	Shaft	1	PP, PVDF	16	Set Pin	1	PVDF

Dimensions Table

Nom. Size DN-inch	JIS														unit:mm	
	D1	D2	D3	e	n No. of holes	D4	D5	D6	L	T	A	h	H	D	Test Press (kgf/cm ²)	Working Press (kgf/cm ²)
25(1")	25	90	125	19	4	110	130	75	160	15	6	40	120	8	10	7
40(1-1/2")	41	105	140	19	4	125	145	85	180	18	8	45	138	8	10	7
50(2")	52	120	155	19	4	155	180	105	200	18	8	55	164	10	10	7
65(2-1/2")	80	140	175	19	4	181	205	130	260	20	9	70	171	12	10	7
80(3")	80	150	185	19	8	181	205	130	260	20	9	70	171	12	10	7
100(4")	100	175	210	19	8	235	265	170	300	24	10	90	213	16	7	5
125(5")	125	210	250	23	8	285	330	210	350	24	14	110	238	18	7	5
150(6")	150	240	280	23	8	330	370	250	400	30	16	135	268	20	7	5
200(8")	200	290	330	23	12	390	425	300	500	30	18	170	306	20	7	5

Check Valve / Horizontal Type



DN25~DN200

Dimensions Table

ANSI															unit:inch	
Nom. Size DN-inch	D1	D2	D3	e	n No. of holes	D4	D5	D6	L	T	A	h	H	D	Test Press (lb/in ²)	Working Press (lb/in ²)
25(1")	1.00	3.13	4.25	0.63	4	4.34	5.13	2.97	6.31	0.59	0.24	1.56	4.72	0.31	150	100
40(1-1/2")	1.63	3.88	5.51	0.63	4	4.94	5.72	3.34	7.09	0.70	0.31	1.78	5.44	0.31	150	100
50(2")	2.06	4.75	6.10	0.75	4	6.09	7.09	4.13	7.88	0.70	0.31	2.16	6.64	0.41	150	100
65(2-1/2")	3.15	5.50	6.88	0.75	4	7.13	8.06	5.13	10.25	0.79	0.35	2.75	6.72	0.47	150	100
80(3")	3.15	6.00	7.28	0.75	4	7.13	8.06	5.13	10.25	0.79	0.35	2.75	6.72	0.47	150	100
100(4")	3.94	7.50	8.26	0.75	8	9.25	10.44	6.69	11.82	0.94	0.39	3.53	8.38	0.63	100	70
125(5")	4.94	8.50	9.84	0.88	8	11.22	13.00	8.28	13.78	0.94	0.55	4.34	9.38	0.72	100	70
150(6")	5.90	9.50	11.02	0.88	8	13.00	14.56	9.84	15.75	1.18	0.63	5.31	10.56	0.78	100	70
200(8")	7.88	11.75	12.99	0.88	8	15.31	16.71	11.81	19.69	1.18	0.71	6.69	12.06	0.78	100	70

DIN															unit:mm	
Nom. Size DN-inch	D1	D2	D3	e	n No. of holes	D4	D5	D6	L	T	A	h	H	D	Test Press (lb/in ²)	Working Press (lb/in ²)
25(1")	25	85	125	14	4	110	130	75	160	15	6	40	120	8	10	7
40(1-1/2")	41	110	140	18	4	125	145	85	180	18	8	45	138	8	10	7
50(2")	52	125	155	18	4	155	180	105	200	18	8	55	164	10	10	7
65(2-1/2")	80	145	175	18	4	181	205	130	260	20	9	70	171	12	10	7
80(3")	80	160	185	18	8	181	205	130	260	20	9	70	171	12	10	7
100(4")	100	180	210	18	8	235	265	170	300	24	10	90	213	16	7	5
125(5")	125	210	250	18	8	285	330	210	350	24	14	110	238	18	7	5
150(6")	150	240	280	23	8	330	370	250	400	30	16	135	268	20	7	5
200(8")	200	295	330	23	8	390	425	300	500	30	18	170	306	20	7	5

Standard dimensions based on PVC material