

Wafer check valve K4



General:

- Body material: PVC-U / PP PPGF / PVDF
- Disc material: PVC-U / PP PPGF / PVDF
- Sealing material: EPDM / FPM
- Dimensions: DN65 - DN250 d75 - d280 2." - 10"
- Standards: DIN 2501 ANSI B 16,5 JIS 10K

Operating pressure:

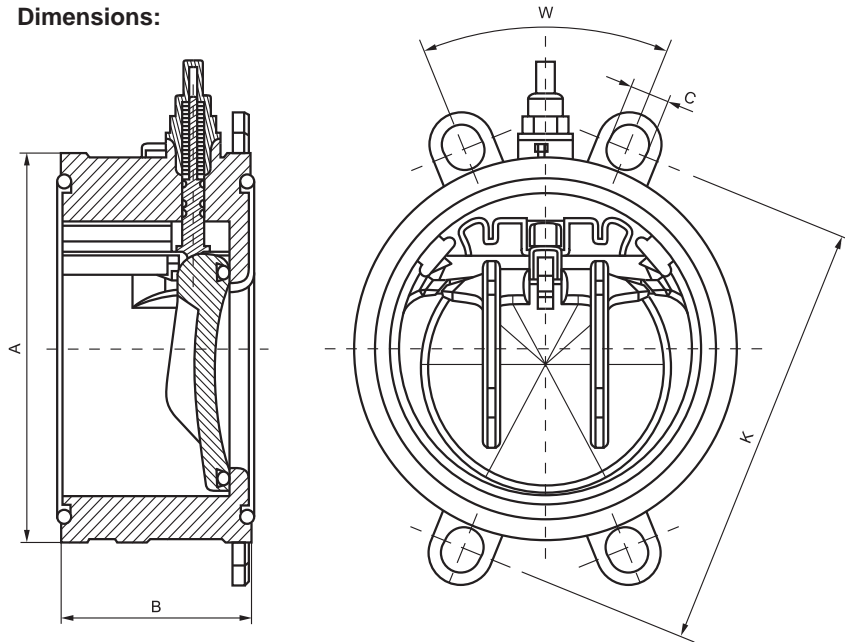
- PVC PN10
- PP PN6
- PP GF DN65 - DN200 PN10
DN250 PN8
- PVDF PN10

Technical features:

- Only plastics and O-Rings are in touch with medium
- Excellent flow rates
- Disc opening up to 85°
- Optional with indicator and springs or without indicator and springs
- Optional spring force for an operating pressure up to 3, 7 or 10 bar (details siehe page 5)
- Easy and quick installation by means of integrated sizing hole template
- No more discharge aids necessary

Wafer check valve K4

Dimensions:



DN	65	80	100	150	200	250
d	75	90	110	160	225	280
A	115	128	155	212	264	325
B	63	71	80	106	140	140
C	20	20	20	20	24	27
K	139 - 145	150 - 160	175 - 191	234 - 242	290 - 299	350 - 362
W	90°	45°	45°	45°	45°	30°
Option flange standard	-	-	BS	BS	BS	BS

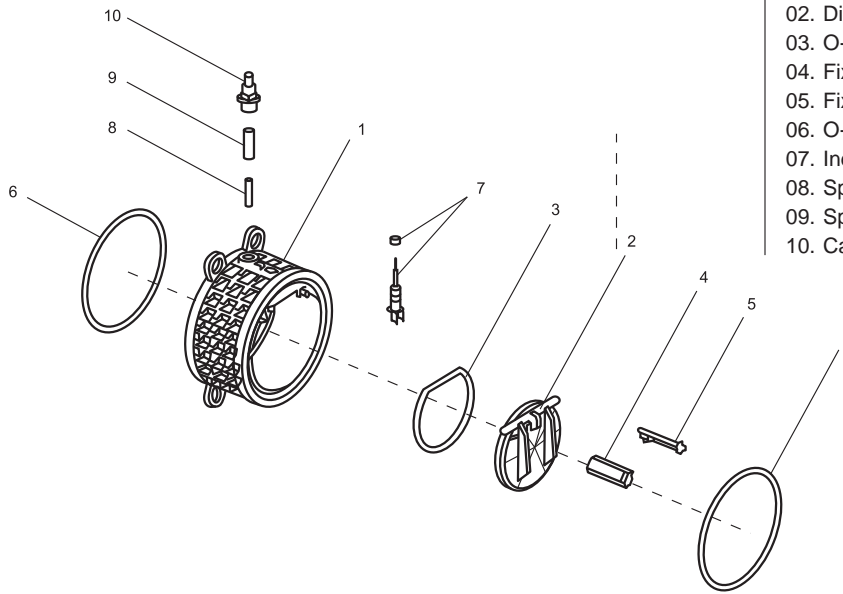
Dimensions in mm

Wafer check valve K4

Exploded drawing:

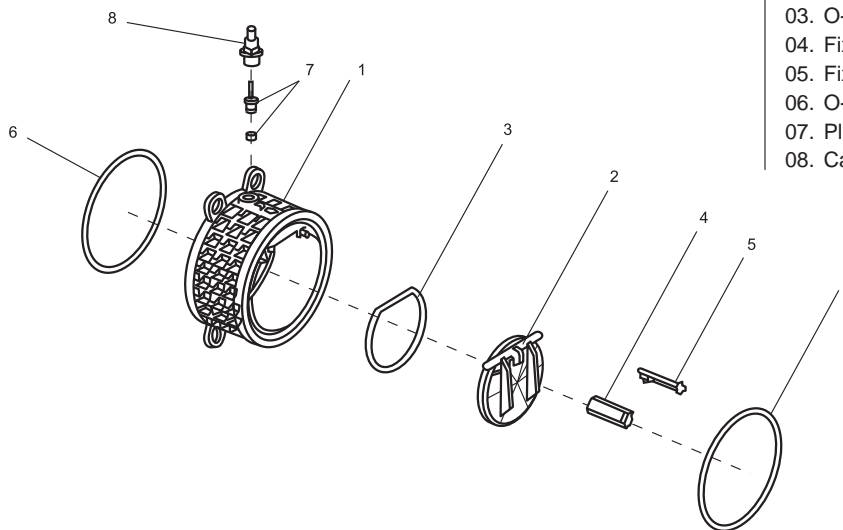
Version with indicator and spring

- 01. Body
- 02. Disc
- 03. O-Ring disc
- 04. Fixing bolt left
- 05. Fixing bolt right
- 06. O-Ring body
- 07. Indicator pin with O-Ring
- 08. Spring PN3
- 09. Spring PN7 | PN6 für PP
- 10. Cap transparent



Version without indicator

- 01. Body
- 02. Disc
- 03. O-Ring disc
- 04. Fixing bolt left
- 05. Fixing bolt right
- 06. O-Ring body
- 07. Plug with O-Ring
- 08. Cap black

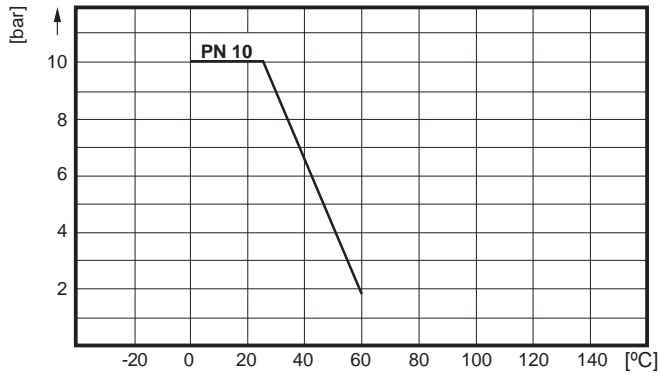


Wafer check valve K4

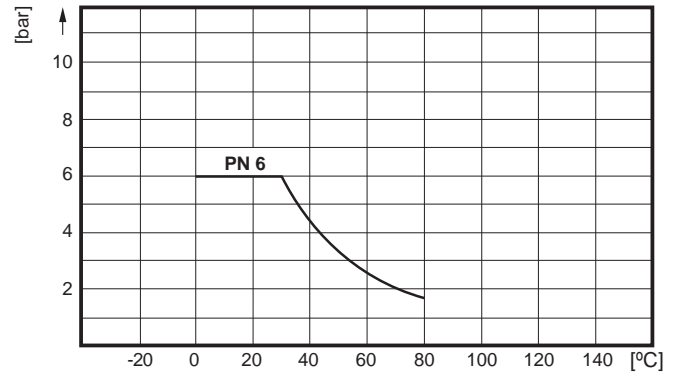
Diagrams:

Pressure - Temperature - Diagram

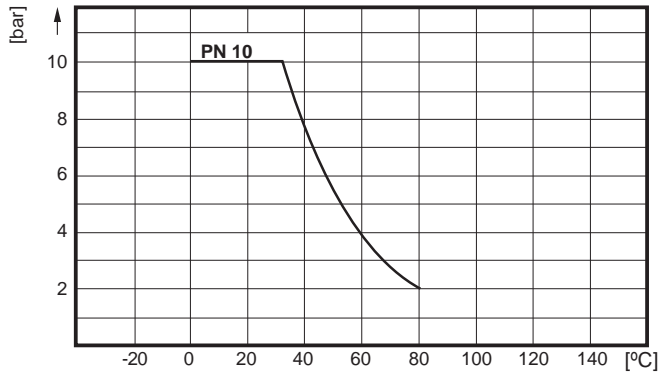
PVC



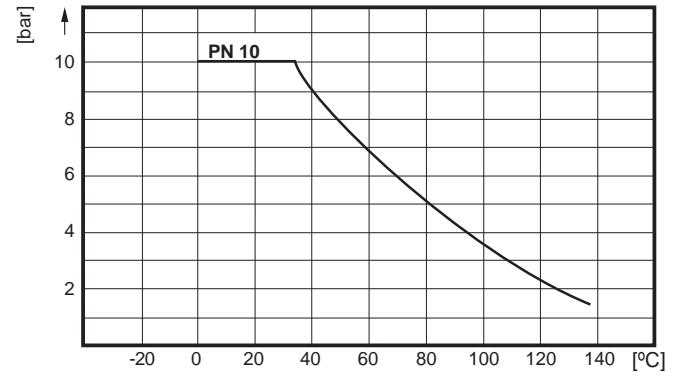
PP



PPGF



PVDF



Wafer check valve K4

Springs and combinations of springs

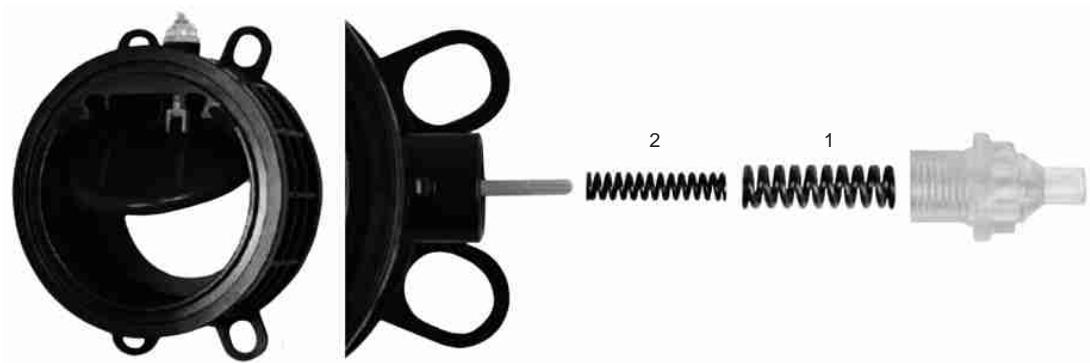
	spring 1	spring 2	spring 1&2
Operating pressure	3,1 - 7 bar	0,5 - 3 bar	7,1 - 10 bar

Example: Operating pressure 7 bar = combination of springs 1 & 2
 Operating pressure 6 bar = spring 1
 Operating pressure 2 bar = spring 2

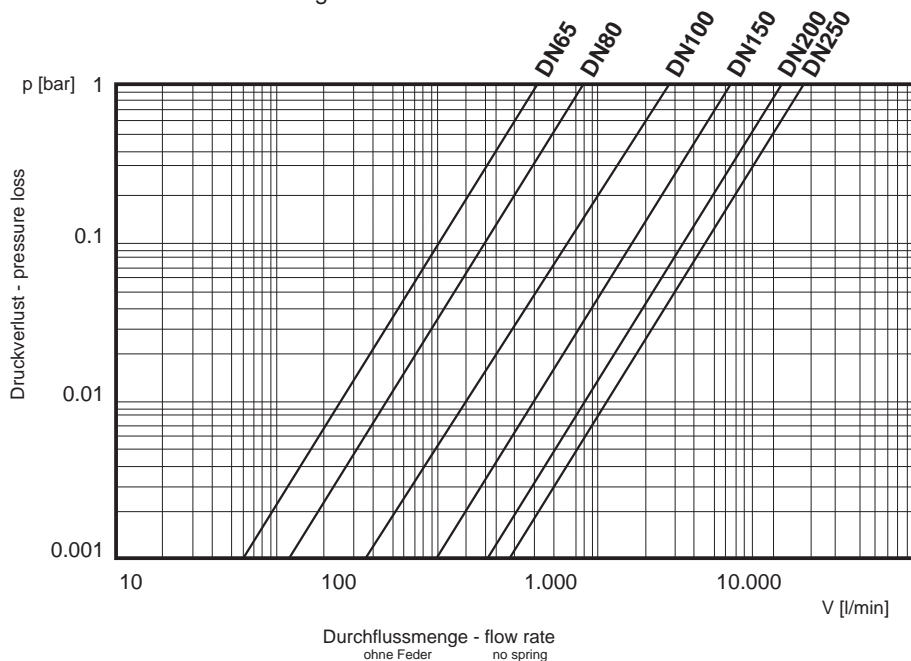
ATTENTION: A backpressure of 0,03 bar is required for a leak-free valve

	PP	PPGF	PVDF	PVC
Pressure level at 20°C (PN)	6 bar	10 bar	10 bar	10 bar

ATTENTION: Respect the pressure - temperatur diagrams für wafer check valves K4!



Pressure loss - diagrams





Wafer check valve K4

Cv value table

pressure loss	1 bar	0.001 bar
DN65	1300 l/min	41 l/min
DN80	2200 l/min	70 l/min
DN100	5700 l/min	180 l/min
DN150	12500 l/min	395 l/min
DN200	21200 l/min	670 l/min
DN250	28000 l/min	885 l/min

Value pressure loss of the diagram, result in the case of maximum opening angle! (85°)

Tightening torque for flange connections

DN	65	80	100	150	200	250
Nm	15	18	20	40	55	60

Installation instructions:

For installation on pumps (pressure part) please note the following:

- No direct installation on pump flanges or bend.
- Before and after the wafer the check valve, a relieve area for the flow of 5 times the used DN must be considered.