

Foot valve S4



General:

- Material: PVC-U / PP
- Strainer: PP
- Sealing material: EPDM / FPM
- Dimensions: DN10 – DN80
d16 – d110
3/8" – 4"

Connector types

PVC

- Solvent socket DIN / ASTM / JIS
- Solvent spigot DIN
- Threaded socket BSP
- PE fusion spigot DIN

PP

- Fusions socket DIN
- Fusion spigot DIN
- Threaded socket BSP

Further connector types on request

Operating pressure:

DN10 d16 d3/8" – DN50 d63 2"
PN16/10

DN65 d75 d2 3/4"
PN16/8

DN80 d90 d3"
PN10/6

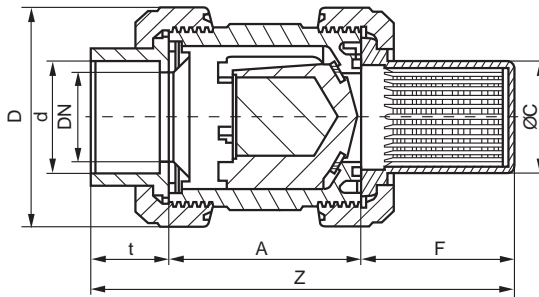
DN80 d110 d4"
PN6

Technical features:

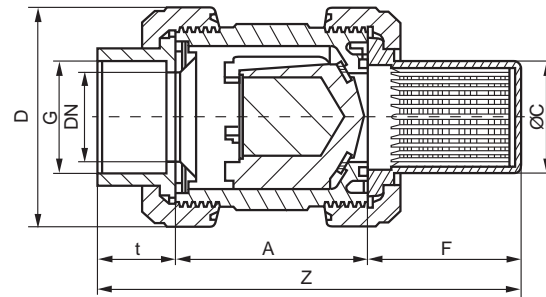
- Maintenance free operation over a long working life
- Service friendliness
- Radial installation or removal
- Quick and exact closing and opening
- Opening pressure 0,025 bar

Foot valve S4

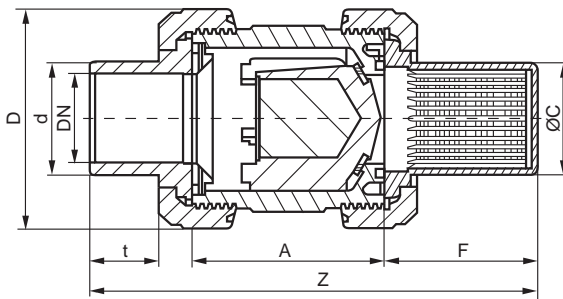
Dimensions:



foot valve with solvent socket



foot valve with threaded socket



foot valve with solvent spigot

PVC

Connection types

PVC solvent socket / threaded socket / solvent spigot

DN	10	15	20	25	32	40	50	65	80	80
d	16	20	25	32	40	50	63	75	90	110
G ^{TSO 1}	3/8"	1/2"	3/4"	1"	1 1/4"	1 1/2"	2"	2 1/2"	3"	-
A	62	62	70	74	84	95	109	137	163	163
C	5.8	5.8	6	6.1	7	7.5	8.5	10.5	13.6	13.6
D	53	53	63	70	85	101	124.5	155	188	188
F	49	49	56	58	72	85	85	108	129	129
t ^{SSO 2}	16.5	16.5	19.5	22.5	26.5	31.5	38.5	45	55.5	64
t ^{SSP 3}	17	17	20	22.5	26.5	31.5	38.5	45	52	64.5
Z ^{TSO 1 SSO 2}	130	130	149	157	186	216	238	295	357	361
Z ^{SSP 3}	137.5	142.5	164	172.5	201.5	230	251.5	319.5	360.5	381.5
PN	16	16	16	16	16	16	16	16	10	6

¹ TSO = threaded socket

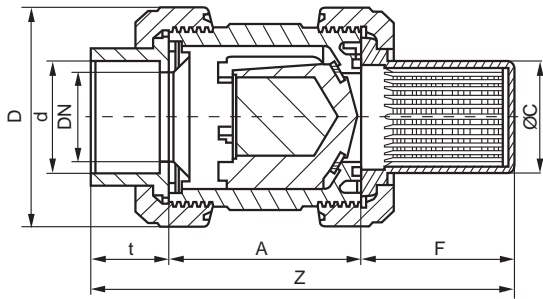
² SSO = solvent socket

³ SSP = Klebestutzen

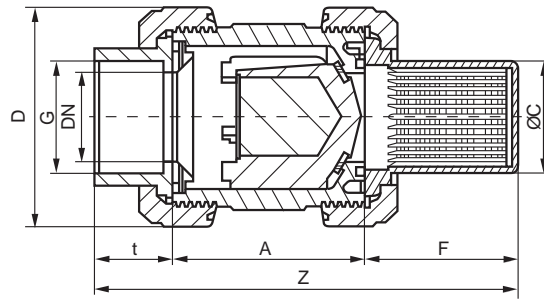
- = nicht realisiert

Dimensions in mm

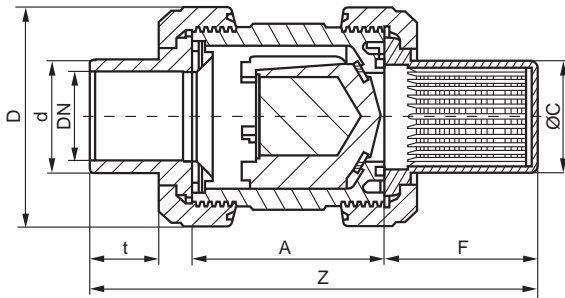
Foot valve S4



foot valve with fusion socket



foot valve with threaded socket



foot valve with fusion spigot

PP

Connection types

PVC fusion socket / fusion spigot / threaded socket

DN	10	15	20	25	32	40	50	65	80	80
d	16	20	25	32	40	50	63	75	90	110
G ^{TSO 1}	3/8"	1/2"	3/4"	1"	1 1/4"	1 1/2"	2"	2 1/2"	3"	-
A	62	62	69	73	83	94	108	133	160	160
C	5.8	5.8	6	6.1	7	7.5	8.5	10.5	13.6	13.6
D	53	53	64	71	84.5	100	120.5	155	187	187
F	49	49	56	58	72	85	85	108	129	129
t _{F^{SO 2}}	14.5	16	17.5	19.5	22	25.5	29	34.5	38.5	42
t _{F^{SP 3}}	13	14	15.5	18.5	20.5	23.5	28	31	36	38
Z ^{TSO 1 F^{SO 2}}	130	130	147	156	194	214	236	290	353	357
Z _{F^{SP 3}}	137	142	162	170	209	228	249	313	356	365
PN	10	10	10	10	10	10	10	8	6	6

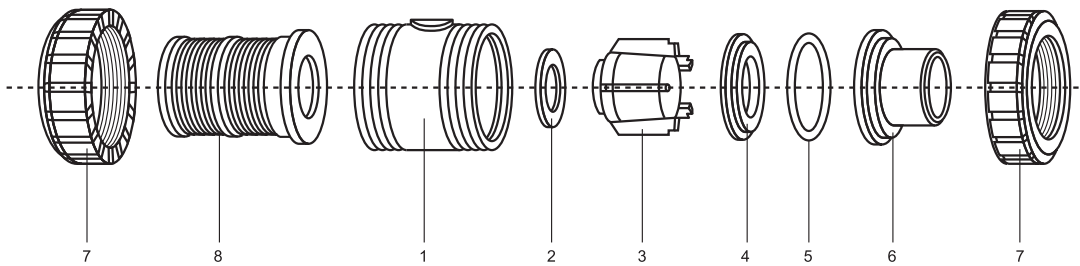
¹ TSO = threaded socket
² FSO = fusion socket
³ FSP = fusion spigot
 - = not realised

Dimensions in mm

Foot valve S4

Exploded drawing:

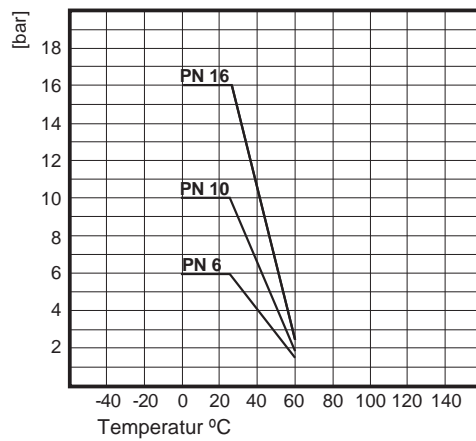
01. Body
02. Flat gasket
03. Cone
04. Thrust collar
05. O-Ring
06. Connector types
 - Solvent socket
 - Solvent spigot
 - threaded socket
 - fusion socket
 - fusion spigot
07. Union nut
08. Strainer



Diagrams:

Pressure - Temperature

PVC



PP

