

Anticorrosive Coated Valves Wafer Type Swing Check Valve

Wafer type swing check valve	
Size	40mm~600mm (1.5"~24")
Working pressure	0.1mbar~16 bar
Temperature range	-20° C ~ 200° C according to working conditions, other temperatures on request.
Design and Manufacture	API 594
Face to Face	ASME EN 558 ASME/ANSI B 16.10
Flange Ends	DIN EN 1092 ANSI B 16.5
Visual Inspection	MSS Sp54
Testing	API 598 DIN 3230 JIS 82003
Pressure & Temperature	ASME B16.34
Spark testing	14kv

Wafer type swing check valve

Fully lined swing check valves are ideal for use in highly corrosive applications due to the universal chemical resistance of fluoropolymer lining.

These valves can be used in horizontal and vertical installations due to the special design of the hinge pin, which enables the disc to achieve a seal with out support of any system pressure.

2- Piece design eliminating a potential leak path with a seat face Integrated in the body liner to seal against the disc in the closed position.

The disc can swing freely within piping system without interference with the diameter of the connecting pipe.



Easy to handle and installation

Wafer type body design

Lined securely locked into the body by "T" slots and locking grooves completely

Compare to pure plastic design, metal disc inside can avoid to break when suddenly shut

Retainer ring. Easy to pop-out&pop-in to replace the disc when abrasion

Epoxy coating paint

Lateral positioning groove connection according to standards. Perfecting material

Thick liner 100% inspected at 14000VDC for defects is made from highly corrosion resistant

Pure solid PFA disc long life use, super high-precision machining to make good seal science on-off performance



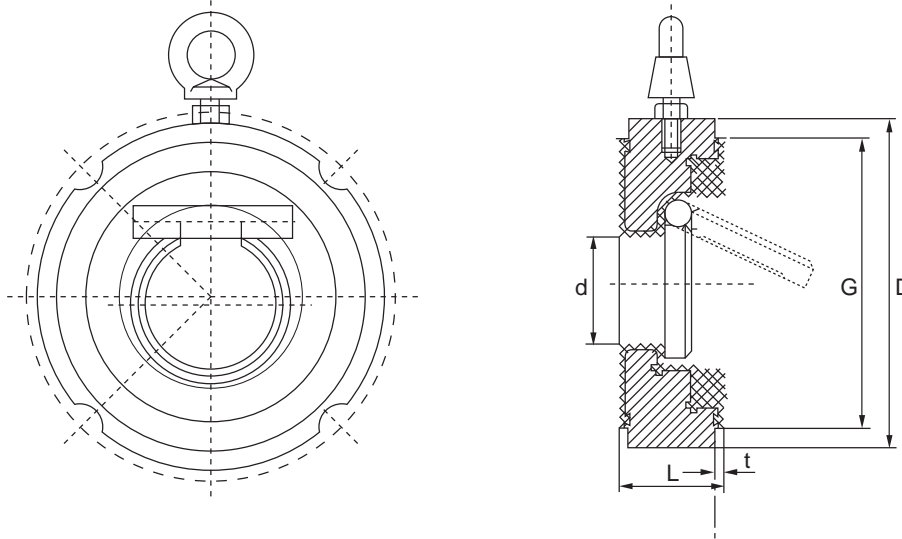
Anticorrosive Coated Valves Wafer Type Swing Check Valve



Materials Selection

No	Name	Qty	Materials	Materials According to Norms		
				ASTM	JIS	DIN
1	BODY	1	Carbon Steel+PFA/FEP/ETFE	A216-WCB	G5151 SCPH2	GS-45(1.0446)
			Slaness Steel+PFA/FEP/ETFE	A351-CF8	G5121 SCS13A	G-X6CrNiMo1810
			Ductile Iron+PFA/FEP/ETFE	ASTM A395	FCD400	GGG-40 (0.7040)
2	BODY LINER	1	PFA/FEP/ETFE/PO/PE	-	-	-
3	DISC	1	Carbon Steel+PFA/FEP/ETFE	A216-WCB	G5151 SCPH2	GS-45(1.0446)
			Slaness Steel+PFA/FEP/ETFE	A351-CF8	G5121 SCS13A	G-X6CrNiMo1810
			Ductile Iron+PFA/FEP/ETFE	ASTM A395	FCD400	GGG-40 (0.7040)
4	RETAINER RING	1	PTFE	-	-	-
5	HAND RING	1	Carbon Steel	A216-WCB	G5151 SCPH2	GS-45(1.0446)
			Stainless Steel	A 182 F304	G4303-SUSF304	X5CrNi18 10 DIN 1.4301
6	NUT	1	Carbon Steel	A216-WCB	G5151 SCPH2	GS-45(1.0446)
			Stainless Steel	A 182 F304	G4303-SUSF304	X5CrNi18 10 DIN 1.4301

Anticorrosive Coated Valves Wafer Type Swing Check Valve



Dimension

Unit: mm

DN mm	NPS in	AMSE / JIS / DIN			D	LINED t	Weight (kg)
		L	d	G			
50	2	43	30	92.1	112.4	3.5	2.7
65	2 1/2	46	55	104.8	131.2	3.5	3
80	3	46	55	127	143.8	3.5	5
100	4	52	72	157.2	181.7	3.5	6.8
150	6	56	115	215.9	231.1	3.5	11
200	8	60	155	269.9	288.1	3.5	19
250	10	68	190	323.8	350.2	4	28
300	12	78	240	381	419.9	4	39
350	14	92	275	412.8	462.9	4	65
400	16	102	305	469.9	526.4	4.5	90
450	18	114	355	533.4	562.5	4.5	104.8
500	20	127	405	584.2	619.6	4.5	165
600	24	154	405	692.2	732.4	4.5	255